



US 20200083450A1

(19) **United States**

(12) **Patent Application Publication**

HAN et al.

(10) **Pub. No.: US 2020/0083450 A1**

(43) **Pub. Date: Mar. 12, 2020**

(54) **ELECTROLUMINESCENT DEVICE, AND DISPLAY DEVICE COMPRISING THEREOF**

Publication Classification

(71) Applicant: **SAMSUNG ELECTRONICS CO., LTD.**, Suwon-si (KR)

(51) **Int. Cl.**
H01L 51/00 (2006.01)

(52) **U.S. Cl.**
CPC *H01L 51/006* (2013.01); *H01L 51/5056* (2013.01); *H01L 51/0072* (2013.01)

(72) Inventors: **Moon Gyu HAN**, Suwon-si (KR); **Dae Young CHUNG**, Suwon-si (KR); **Kwanghee KIM**, Seoul (KR); **Eun Joo JANG**, Suwon-si (KR); **Chan Su KIM**, Seoul (KR); **Kun Su PARK**, Seongnam-si (KR); **Won Sik YOON**, Seoul (KR)

(57) **ABSTRACT**

An electroluminescent device includes a first electrode and a second electrode facing each other; an emission layer disposed between the first electrode and the second electrode and including a plurality of quantum dots and a first hole transporting material having a substituted or unsubstituted C4 to C20 alkyl group attached to a backbone structure; a hole transport layer disposed between the emission layer and the first electrode and including a second hole transporting material; and an electron transport layer disposed between the emission layer and the second electrode.

(21) Appl. No.: **16/562,601**

(22) Filed: **Sep. 6, 2019**

(30) **Foreign Application Priority Data**

Sep. 7, 2018 (KR) 10-2018-0107005

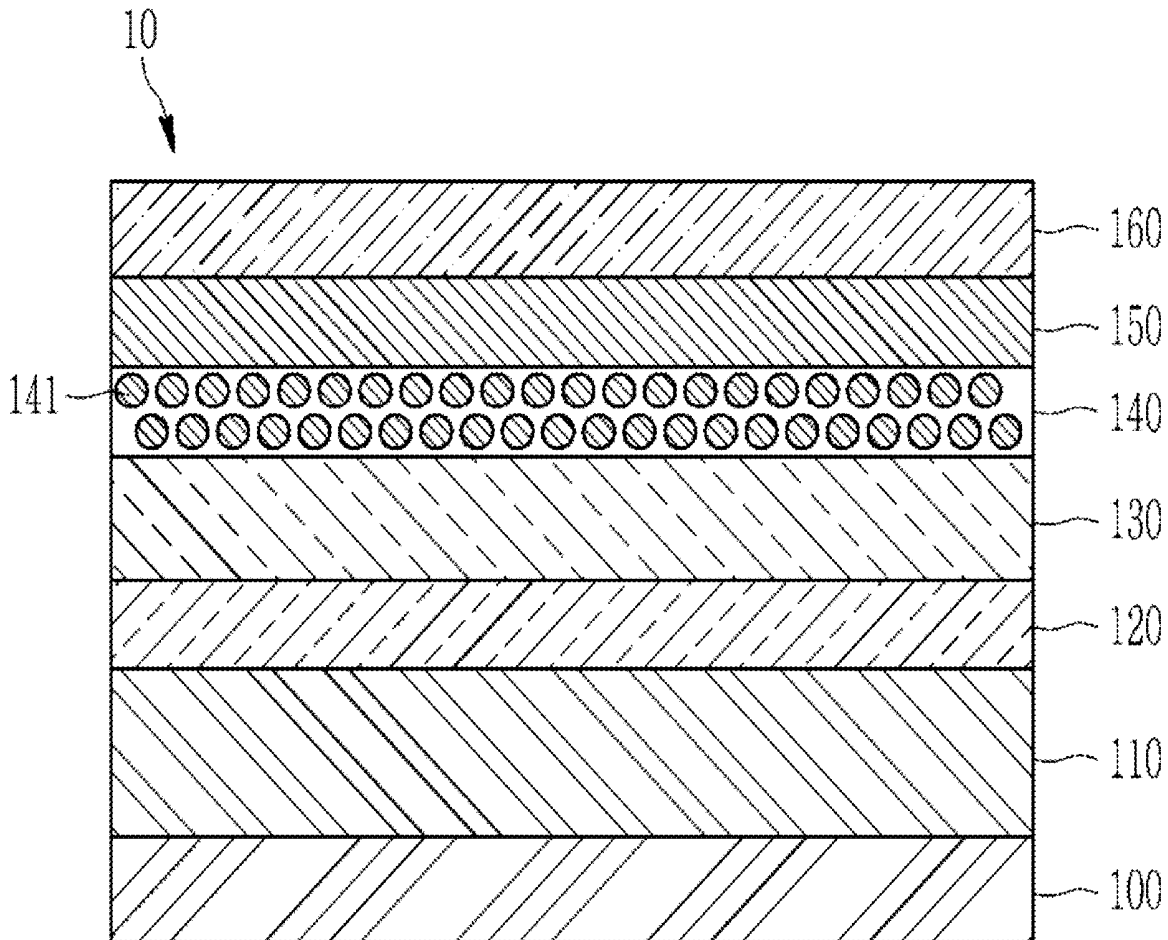


FIG. 1

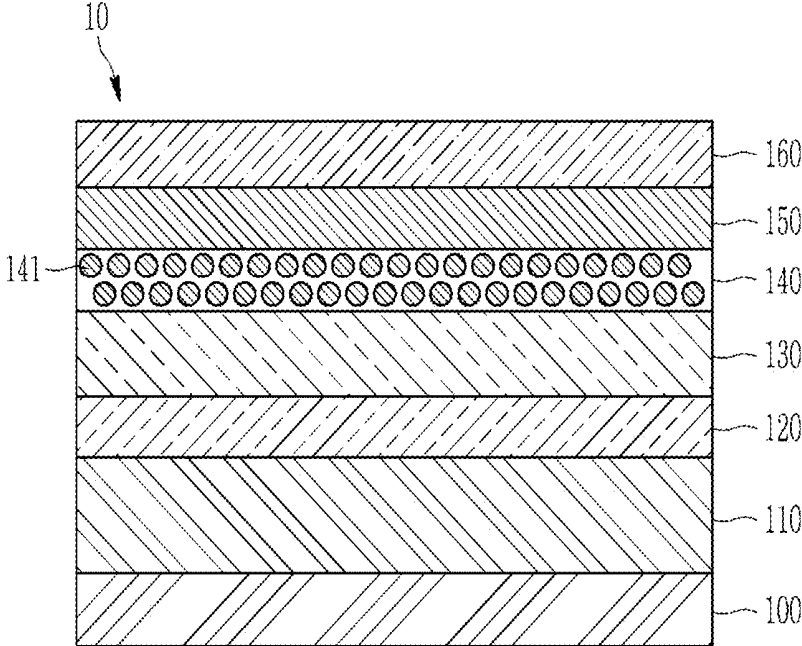


FIG. 2

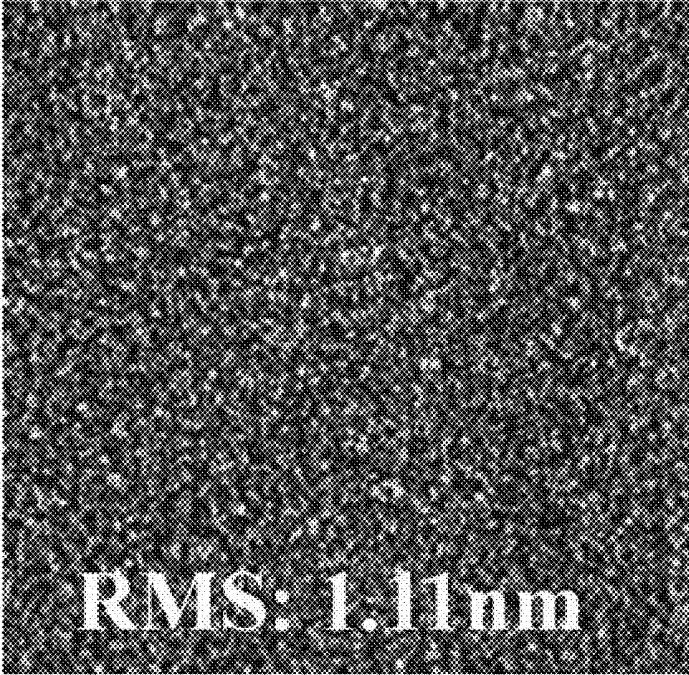


FIG. 3

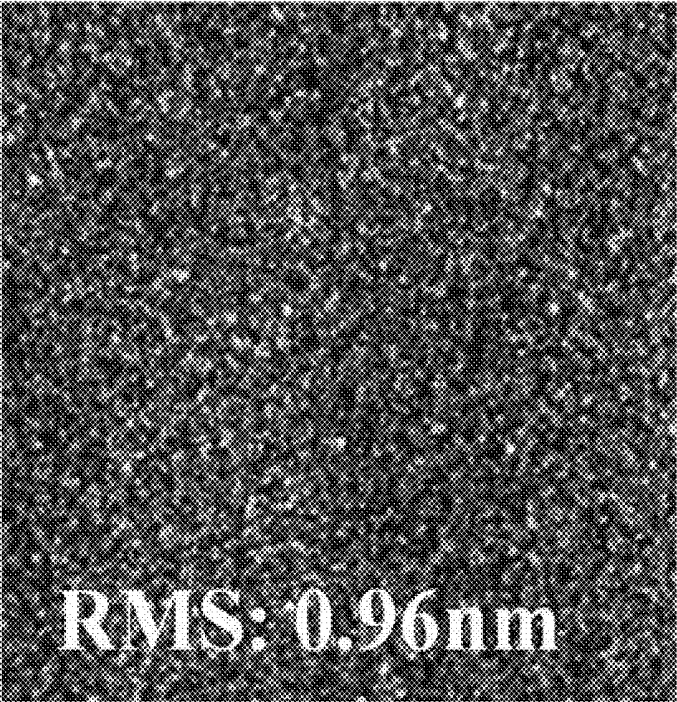


FIG. 4

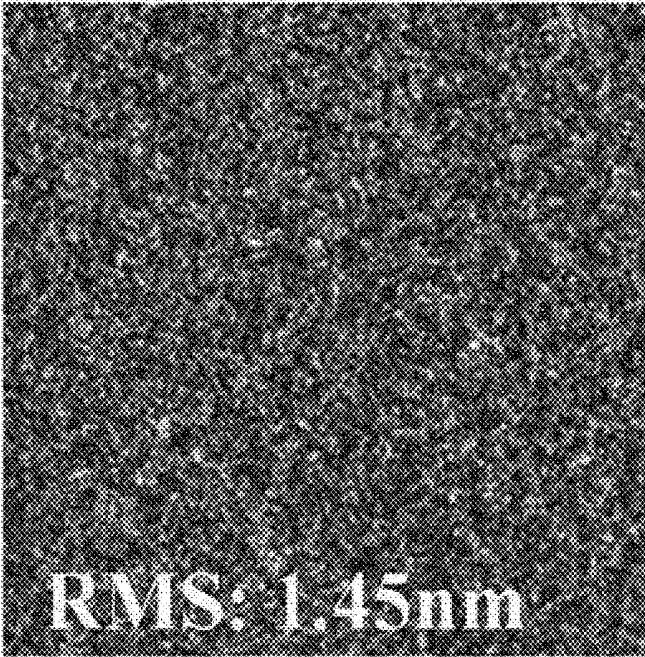


FIG. 5

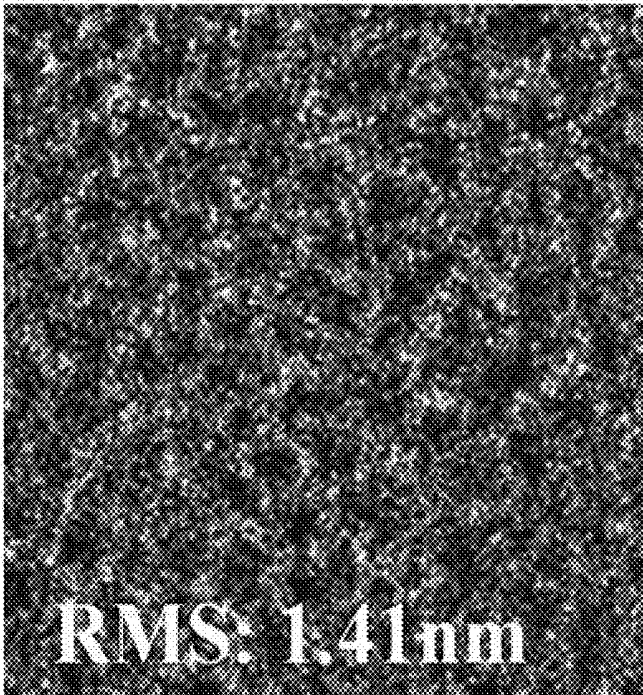


FIG. 6

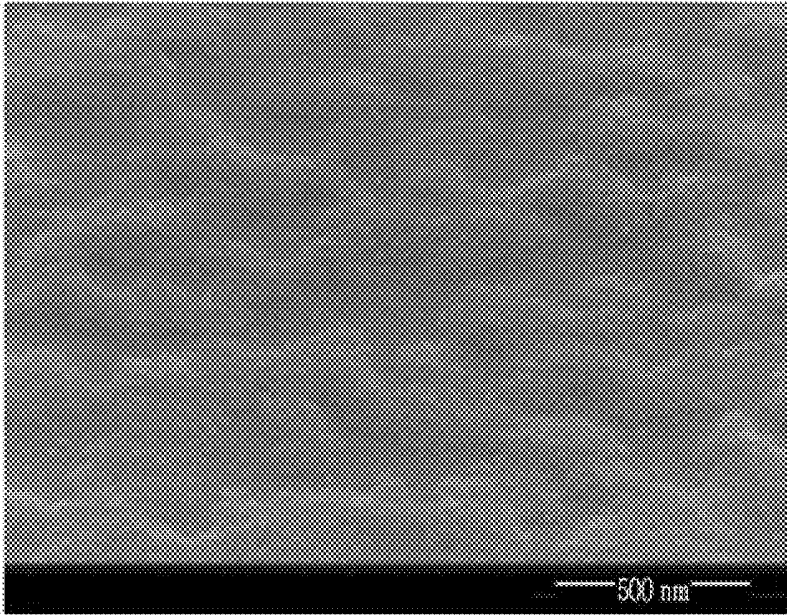


FIG. 7

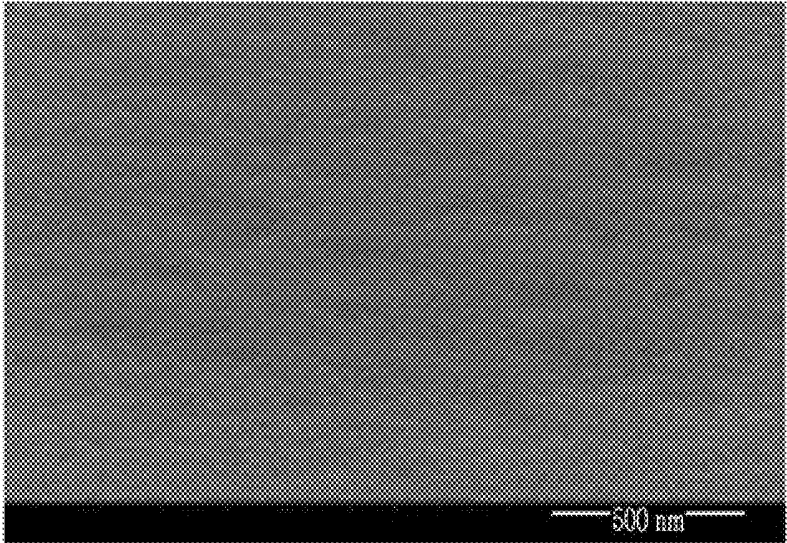


FIG. 8

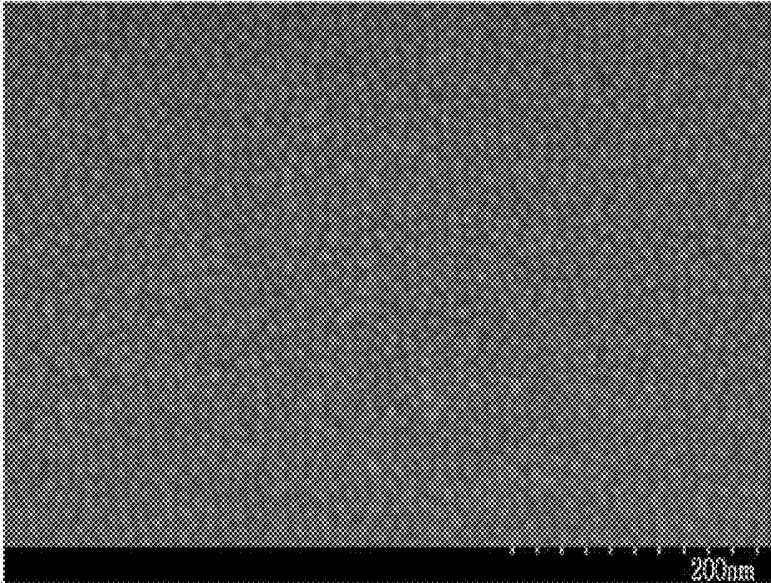


FIG. 9

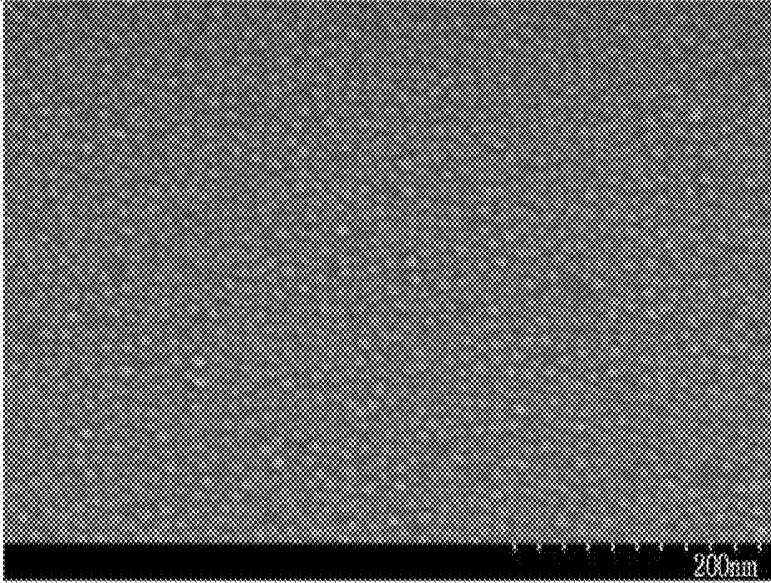


FIG. 10

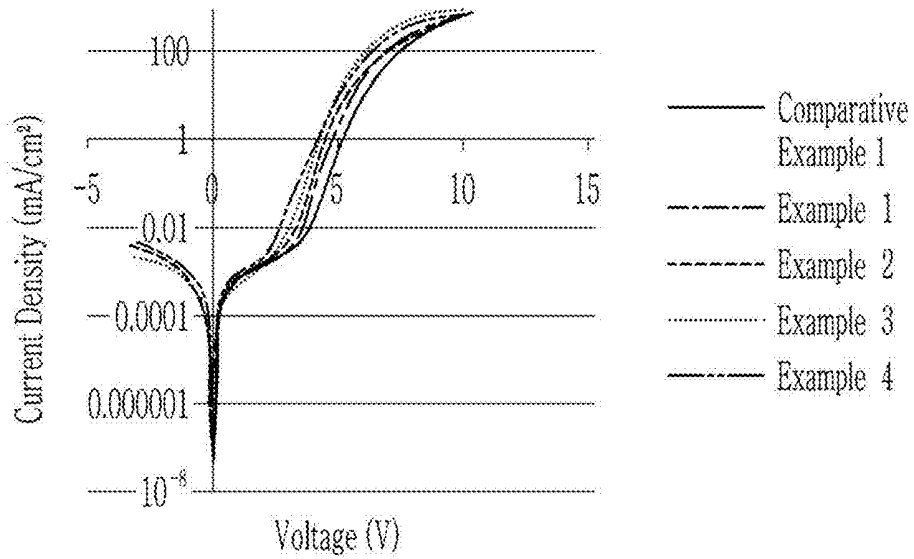


FIG. 11

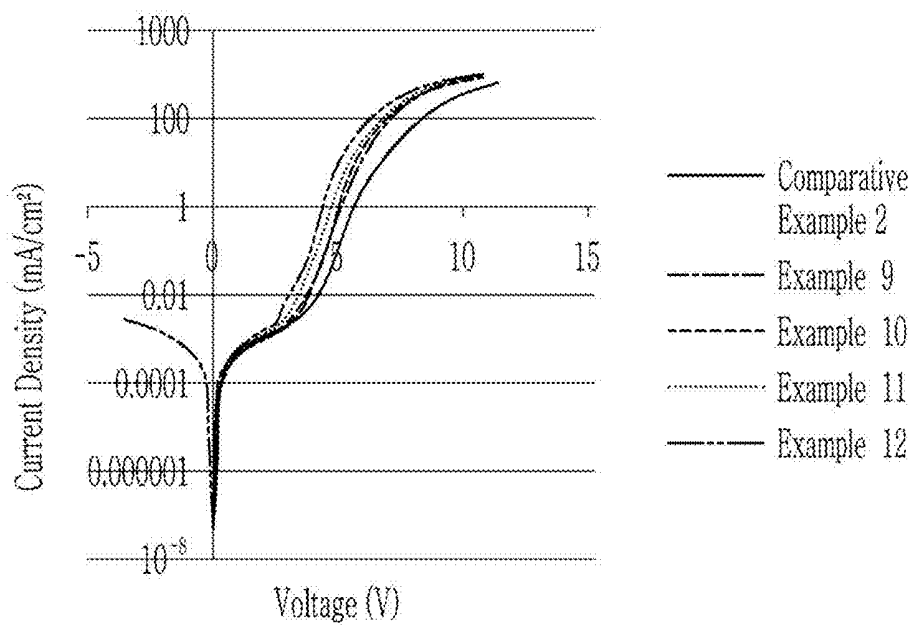


FIG. 12

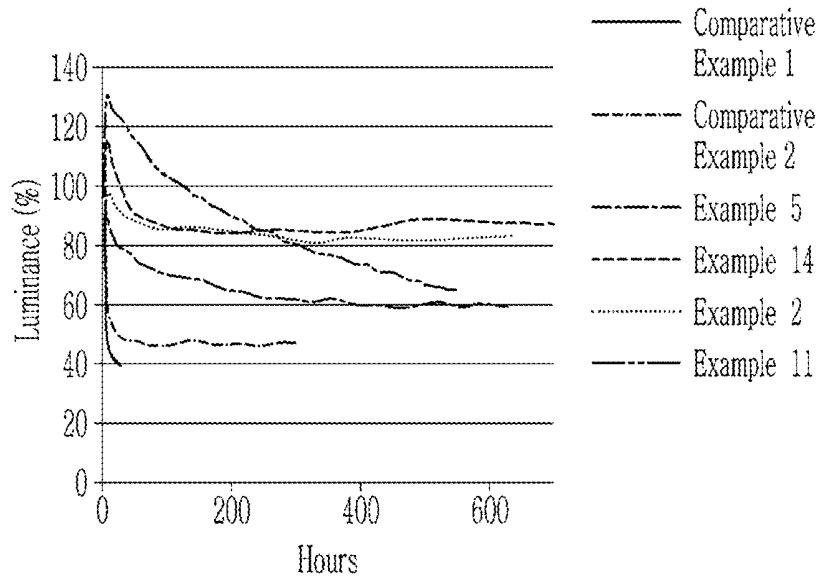
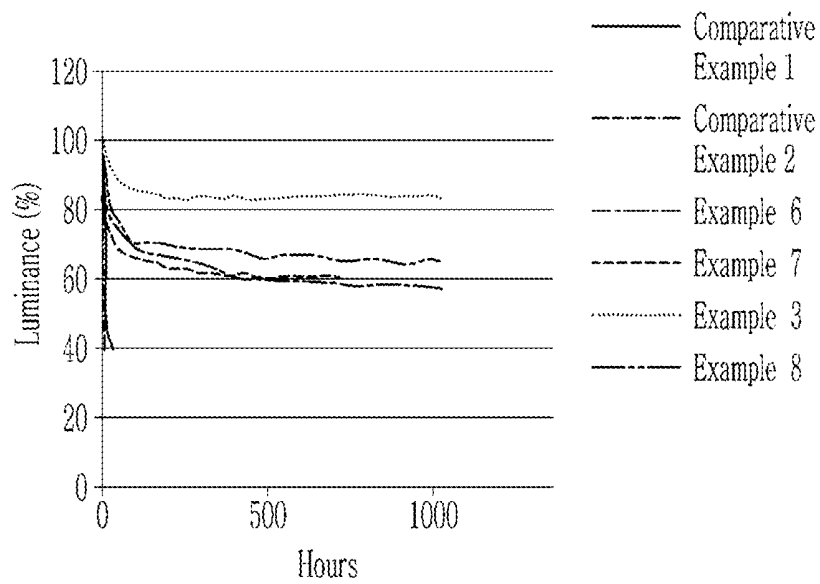


FIG. 13



ELECTROLUMINESCENT DEVICE, AND DISPLAY DEVICE COMPRISING THEREOF

CROSS-REFERENCE TO RELATED APPLICATION

[0001] This application claims priority to and the benefit of Korean Patent Application No. 10-2018-0107005 filed in the Korean Intellectual Property Office on Sep. 7, 2018, and all the benefits accruing therefrom under 35 U.S.C. § 119, the entire content of which is incorporated herein by reference.

BACKGROUND

1. Field

[0002] An electroluminescent device and a display device including the same are disclosed.

2. Description of the Related Art

[0003] Quantum dots are nanocrystal semiconductor materials having a diameter of less than or equal to around

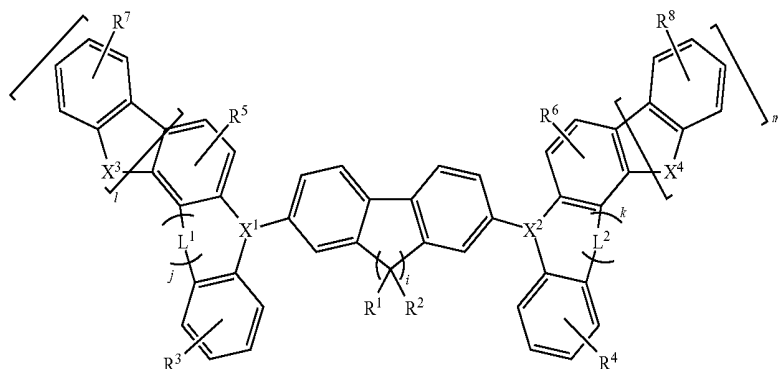
emission layer by a variety of factors, it may cause a problem such as exciton quenching.

SUMMARY

[0006] Provided are an electroluminescent device having improved device characteristics by improving hole transporting capability and surface characteristics of an emission layer and a display device including the same.

[0007] According to an embodiment, an electroluminescent device includes a first electrode and a second electrode facing each other; an emission layer disposed between the first electrode and the second electrode and including a plurality of quantum dots and a first hole transporting material including a substituted or unsubstituted C4 to C20 alkyl group attached to a backbone structure; a hole transport layer disposed between the emission layer and the first electrode, and including a second hole transporting material; and an electron transport layer disposed between the emission layer and the second electrode.

[0008] The first hole transporting material may include a compound represented by Chemical Formula 1.



Chemical Formula 1

10 nm, and show quantum confinement effects. Quantum dots generate stronger intensity light in a narrower wavelength region than the commonly used phosphor. Quantum dots emit light while the excited electrons are transitioned from a conduction band to a valence band and emission wavelengths vary depending upon a particle size of the quantum dots. Quantum dots can therefore be used to obtain light in a desirable wavelength region by adjusting the size of the quantum dots.

[0004] Advantages to electronic devices having an emission layer including quantum dots include reduced production cost, as compared to the organic light emitting diode (OLED) using an emission layer including phosphorescence and/or phosphor material. In addition, different colors may be emitted by changing the size of the quantum dots, whereas OLED devices require the use of different organic materials in the emission layer for emitting different colors of light.

[0005] The luminous efficiency of the emission layer including quantum dots is determined by quantum efficiency of quantum dots, a balance of charge carriers, light extraction efficiency, and the like. Particularly, in order to improve the quantum efficiency, the excitons may be confined in the emission layer, but when the excitons are not confined in the

[0009] In Chemical Formula 1,

[0010] R^1 to R^8 are each independently a substituted or unsubstituted C4 to C20 alkyl group, a substituted or unsubstituted C3 to C20 cycloalkyl group, a substituted or unsubstituted C6 to C20 aryl group, a substituted or unsubstituted C3 to C20 heteroaryl group, a substituted or unsubstituted C2 to C40 alkylamine group, or a substituted or unsubstituted C6 to C40 arylamine group, provided that at least one of R^1 to R^8 is a substituted or unsubstituted C4 to C20 alkyl group, and

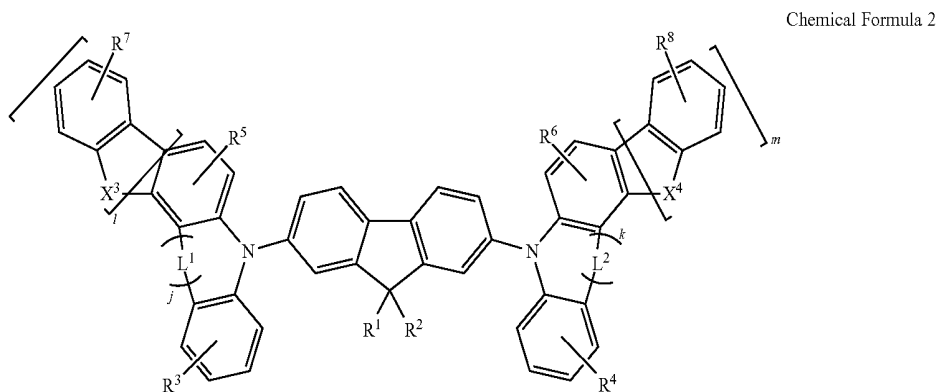
[0011] when R^3 to R^8 are a substituted or unsubstituted C3 to C20 cycloalkyl group, a substituted or unsubstituted C6 to C20 aryl group, or a substituted or unsubstituted C3 to C20 heteroaryl group, they are fused with an adjacent aromatic ring to provide a C8 to C15 fused ring,

[0012] X^1 and X^2 are independently selected from N and C($-R^a$), and X^3 and X^4 are independently selected from S, N- R^b , and C($-R^c$)($-R^d$), wherein R^a , R^b , R^c , and R^d are independently selected from a substituted or unsubstituted C1 to C20 alkyl group, a substituted or unsubstituted C3 to C20 cycloalkyl group, a substituted or unsubstituted C6 to C20 aryl group, and a substituted or unsubstituted C3 to C20 heteroaryl group,

[0013] L^1 and L^2 are independently selected from a single bond and a substituted or unsubstituted methylene group or C2 to C4 alkenylene group, and

[0014] i, j, k, l, and m are independently 0 or 1.

[0015] The first hole transporting material may include a compound represented by Chemical Formula 2.



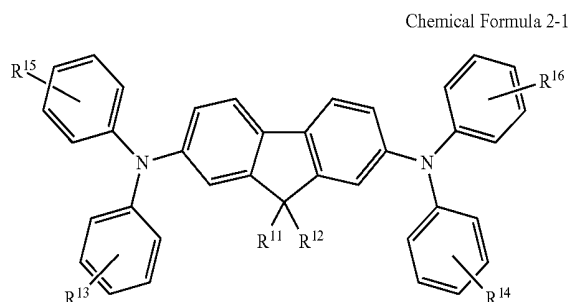
[0016] wherein, in Chemical Formula 2, X^3 , X^4 , L^1 , L^2 , j , k , l , and m are the same as defined in Chemical Formula 1,

[0017] R^1 to R^8 are each independently a substituted or unsubstituted C4 to C20 alkyl group, a substituted or unsubstituted C3 to C20 cycloalkyl group, a substituted or unsubstituted C6 to C20 aryl group, a substituted or unsubstituted C3 to C20 heteroaryl group, a substituted or unsubstituted C2 to C40 alkylamine group, or a substituted or unsubstituted C6 to C40 arylamine group, provided that at least one of R^1 to R^6 is a substituted or unsubstituted C4 to C20 alkyl group, and

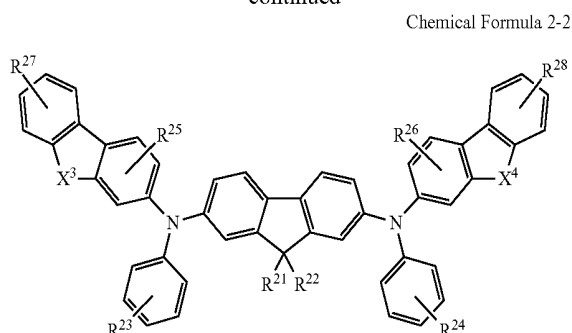
[0018] when R^3 to R^6 are one of a substituted or unsubstituted C3 to C20 cycloalkyl group, a substituted or unsubstituted C6 to C20 aryl group, or a substituted or unsubstituted C3 to C20 heteroaryl group, they are fused with an adjacent aromatic ring to provide a C8 to C40 fused ring.

[0019] At least two of R^1 to R^6 may be a substituted or unsubstituted C4 to C20 alkyl group.

[0020] The first hole transporting material may include at least one of compounds represented by Chemical Formula 2-1 to Chemical Formula 2-2.



-continued



[0021] In Chemical Formula 2-1 to Chemical Formula 2-2,

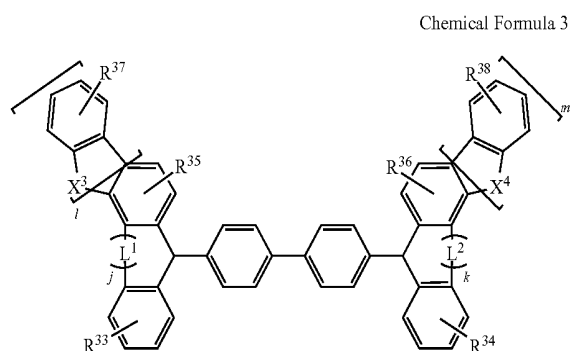
[0022] X^3 and X^4 are the same as defined in Chemical Formula 1,

[0023] R^{11} , R^{12} , R^{13} , R^{14} , R^{15} , R^{16} , R^{21} , R^{22} , R^{23} , R^{24} , R^{25} , and R^{26} are each independently a substituted or unsubstituted C4 to C20 alkyl group, a substituted or unsubstituted C3 to C20 cycloalkyl group, a substituted or unsubstituted C6 to C20 aryl group, a substituted or unsubstituted C3 to C20 heteroaryl group, provided that at least one of R^{11} to R^{14} and at least one of R^{21} to R^{26} are a substituted or unsubstituted C4 to C20 alkyl group,

[0024] R^{27} and R^{28} are independently a substituted or unsubstituted C2 to C40 alkylamine group, a substituted or unsubstituted C6 to C40 arylamine group, or a substituted or unsubstituted carbazolyl group, and

[0025] when R^{13} , R^{14} , R^{15} , R^{16} , R^{23} , R^{24} , R^{25} and R^{26} are one of a substituted or unsubstituted C3 to C20 cycloalkyl group, a substituted or unsubstituted C6 to C20 aryl group, or a substituted or unsubstituted C3 to C20 heteroaryl group, they are fused with an adjacent aromatic ring to provide a C8 to C40 fused ring.

[0026] The first hole transporting material may include a compound represented by Chemical Formula 3.



[0027] In Chemical Formula 3,

[0028] X^3 , X^4 , L^1 , L^2 , j , k , l , and m are independently the same as defined in Chemical Formula 1,

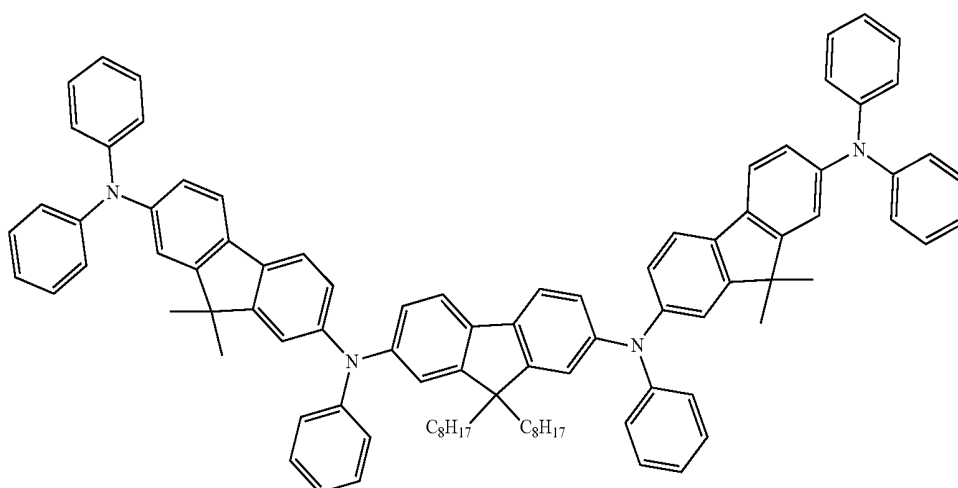
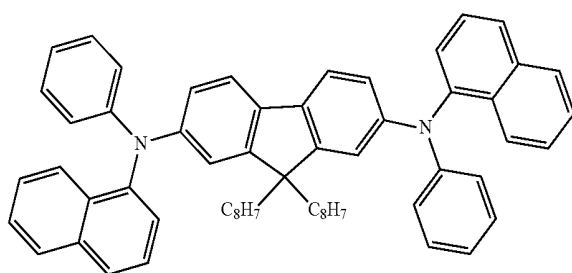
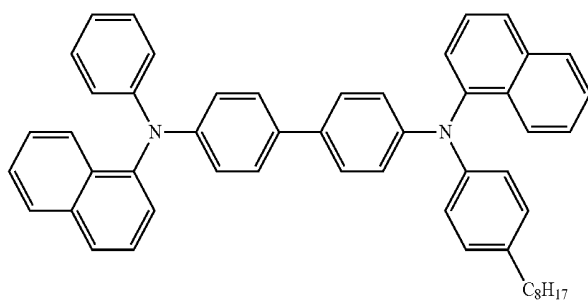
[0029] R^{33} , R^{34} , R^{35} , R^{36} , R^{37} , and R^{38} are each independently a substituted or unsubstituted C4 to C20 alkyl group,

a substituted or unsubstituted C3 to C20 cycloalkyl group, a substituted or unsubstituted C6 to C20 aryl group, a substituted or unsubstituted C3 to C20 heteroaryl group, a substituted or unsubstituted C2 to C40 alkylamine group, or a substituted or unsubstituted C6 to C40 arylamine group, provided that at least one of R^{33} to R^{38} is a substituted or unsubstituted C4 to C20 alkyl group, and

[0030] when R^{33} , R^{34} , R^{35} , R^{36} , R^{37} , and R^{38} are a substituted or unsubstituted C3 to C20 cycloalkyl group, a substituted or unsubstituted C6 to C20 aryl group, or a substituted or unsubstituted C3 to C20 heteroaryl group, they are fused with an adjacent aromatic to provide a C8 to C40 fused ring.

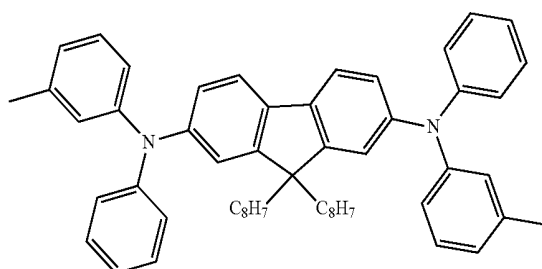
[0031] At least two of R^{33} to R^{36} may be an unsubstituted C4 to C10 linear or branched alkyl group.

[0032] The first hole transporting material may include at least one of compounds represented by Chemical Formula A to Chemical Formula F.

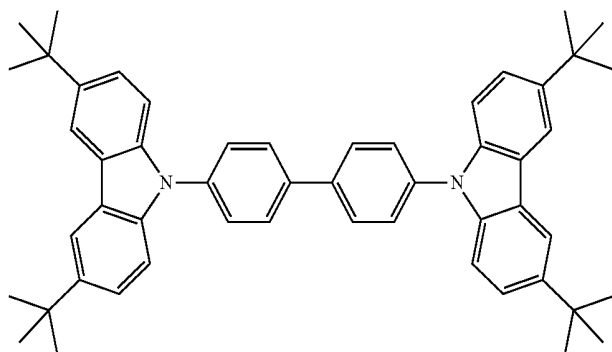


-continued

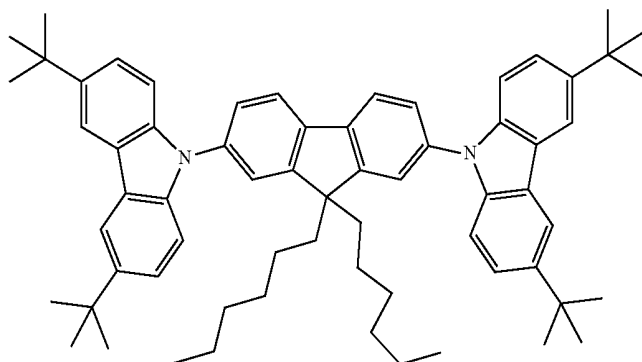
Chemical Formula D



Chemical Formula E



Chemical Formula F



[0033] The first hole transporting material may have a solubility in a non-polar solvent.

[0034] The first hole transporting material may be included in an amount of greater than or equal to 2 weight percent (wt %) and less than 50 wt % based on a total weight of the emission layer.

[0035] A root mean square roughness of the surface of the emission layer measured by atomic-force microscopy (AFM) may be about 0.5 to about 2.0.

[0036] The plurality of quantum dots may be further include a hydrophobic ligand bound to a surface thereof.

[0037] The plurality of quantum dots may include a Group II-VI compound, a Group III-V compound, a Group IV-VI compound, a Group IV element or compound, a Group V compound, a Group I—II-IV-VI compound, or a combination thereof.

[0038] The quantum dots may have a core-shell structure.

[0039] The second hole transporting material and the first hole transporting material may be a different material.

[0040] The second hole transporting material may include a poly(3,4-ethylenedioxythiophene) or derivative, a poly(styrenesulfonate) or derivative, a poly(N-vinylcarbazole) or derivative, a poly(phenylenevinylene) or derivative, a poly

((C1 to C6 alkyl)(meth)acrylate) or derivative, a poly(C6 to C40 arylamine) or derivative, a polyaniline or derivative, a polypyrrole or derivative, a poly(9,9-dioctylfluorene) or derivative, a poly(spiro-fluorene) or derivative, a poly-(N, N'-diphenyl-N,N'-bis(3-methylphenyl)-(1,1'-biphenyl)-4,4'-diamine) or derivative, NiO, MoO₃, or a combination thereof.

[0041] The electron transport layer may include an inorganic nanoparticle, a quinolone compound, a triazine compound, a quinoline compound, a triazole compound, a naphthalene compound, or a combination thereof.

[0042] The electron transport layer may include a cluster layer including a plurality of inorganic nanoparticles.

[0043] The electron transport layer may have an average thickness of about 20 nanometers (nm) to about 100 nm.

[0044] A hole injection layer may be further disposed between the first electrode and the hole transport layer.

[0045] According to another embodiment, a display device including the electroluminescent device is provided.

[0046] The electroluminescent device having improved device characteristics due to improved hole transporting capability and surface characteristics of the emission layer and a display device including the same are provided.

BRIEF DESCRIPTION OF THE DRAWINGS

[0047] These and/or other aspects will become apparent and more readily appreciated from the following description of the embodiments, taken in conjunction with the accompanying drawings in which:

[0048] FIG. 1 is a schematic cross-sectional view of an electroluminescent device according to an embodiment,

[0049] FIGS. 2 to 5 are atomic force microscopic (AFM) images showing surface morphology of the emission layer thin films (Comparative Preparation Example 1 (FIG. 2), Preparation Example 3 (FIG. 3), Comparative Preparation Example 2 (FIG. 4), and Preparation Example 5 (FIG. 5)),

[0050] FIGS. 6 to 9 are scanning electron microscopic images of the emission layer thin films (Comparative Preparation Example 3 (FIG. 6), Comparative Preparation Example 4 (FIG. 7), Preparation Example 10 (FIG. 8), and Preparation Example 11 (FIG. 9)),

[0051] FIG. 10 is a graph of current density (milliamperes per square centimeter, mA/cm²) versus voltage (volts, V) showing voltage-current density (log scale) characteristics of the electroluminescent devices according to Examples 1 to 4 and Comparative Example 1,

[0052] FIG. 11 is a graph of current density (mA/cm²) versus voltage (V) showing voltage-current density (log scale) characteristics of the electroluminescent devices according to Examples 9 to 12 and Comparative Example 2,

[0053] FIG. 12 is a graph of luminance (%) versus time (hours) showing life-span characteristics of the electroluminescent devices according to Examples 2, 5, 11, and 14 and Comparative Examples 1 and 2, and

[0054] FIG. 13 is a graph of luminance (%) versus time (hours) showing life-span characteristics of the electroluminescent devices according to Examples 3, 6, 7, and 8 and Comparative Examples 1 and 2.

DETAILED DESCRIPTION

[0055] Example embodiments of the present disclosure will hereinafter be described in detail, and may be easily performed by a person having an ordinary skill in the related art. However, this disclosure may be embodied in many different forms, and is not to be construed as limited to the example embodiments set forth herein.

[0056] As used herein, the singular forms “a,” “an,” and “the” are intended to include the plural forms, including “at least one,” unless the content clearly indicates otherwise. “Combinations” is inclusive of blends, mixtures, alloys, reaction products, and the like. “Or” means “and/or” unless clearly indicated otherwise by context. Reference throughout the specification to “an embodiment” means that a particular element described in connection with the embodiment is included in at least one embodiment described herein, and may or may not be present in other embodiments. The described elements may be combined in any suitable manner in the various embodiments. “Combination thereof” is an open term that includes one or more of the named elements, optionally together with a like element not named.

[0057] It will be understood that, although the terms “first,” “second,” “third” etc. may be used herein to describe various elements, components, regions, layers and/or sections, these elements, components, regions, layers and/or sections should not be limited by these terms. These terms are only used to distinguish one element, component, region,

layer or section from another element, component, region, layer or section. Thus, “a first element,” “component,” “region,” “layer” or “section” discussed below could be termed a second element, component, region, layer or section without departing from the teachings herein.

[0058] The endpoints of all ranges directed to the same component or property are inclusive and independently combinable (e.g., ranges of “less than or equal to 25 wt %, or 5 wt % to 20 wt %,” is inclusive of the endpoints and all intermediate values of the ranges of “5 wt % to 25 wt %,” etc.). Disclosure of a narrower range or more specific group in addition to a broader range is not a disclaimer of the broader range or larger group. “About” or “approximately” as used herein is inclusive of the stated value and means within an acceptable range of deviation for the particular value as determined by one of ordinary skill in the art, considering the measurement in question and the error associated with measurement of the particular quantity (i.e., the limitations of the measurement system). For example, “about” can mean within one or more standard deviations, or within $\pm 30\%$, 20%, 10%, 5% of the stated value.

[0059] Unless otherwise defined, all terms (including technical and scientific terms) used herein have the same meaning as commonly understood by one of ordinary skill in the art to which this general inventive concept belongs. It will be further understood that terms, such as those defined in commonly used dictionaries, should be interpreted as having a meaning that is consistent with their meaning in the context of the relevant art and the present disclosure, and will not be interpreted in an idealized or overly formal sense unless expressly so defined herein.

[0060] Exemplary embodiments are described herein with reference to cross section illustrations that are schematic illustrations of idealized embodiments. In the drawings, the thickness of layers, films, panels, regions, etc., are exaggerated for clarity. As such, variations from the shapes of the illustrations as a result, for example, of manufacturing techniques and/or tolerances, are to be expected. Thus, embodiments described herein should not be construed as limited to the particular shapes of regions as illustrated herein but are to include deviations in shapes that result, for example, from manufacturing. For example, a region illustrated or described as flat may, typically, have rough and/or nonlinear features. Moreover, sharp angles that are illustrated may be rounded. Thus, the regions illustrated in the figures are schematic in nature and their shapes are not intended to illustrate the precise shape of a region and are not intended to limit the scope of the present claims. Like reference numerals designate like elements throughout the specification and drawings.

[0061] Spatially relative terms, such as “beneath,” “under,” “below,” “lower,” “above,” “upper” and the like, may be used herein for ease of description to describe one element or feature’s relationship to another element(s) or feature(s) as illustrated in the figures. It will be understood that the spatially relative terms are intended to encompass different orientations of the device in use or operation in addition to the orientation depicted in the figures. For example, if the device in the figures is turned over, elements described as “below” or “beneath” other elements or features would then be oriented “above” the other elements or features. Thus, the exemplary term “below” can encompass both an orientation of above and below. The device may be otherwise oriented (rotated 90 degrees or at other orienta-

tions) and the spatially relative descriptors used herein interpreted accordingly. It will be understood that when an element such as a layer, film, region, or substrate is referred to as being “on” another element, it can be directly on the other element or intervening elements may also be present. In contrast, when an element is referred to as being “directly on” another element, there are no intervening elements present.

[0062] As used herein, the term “alkyl group” refers to a group derived from a straight or branched chain saturated aliphatic hydrocarbon having the specified number of carbon atoms and having a valence of at least one. Specific examples of the alkyl group may be a methyl group, an ethyl group, an isopropyl group, a tert-butyl group, an n-octyl group, an n-decyl group, an n-hexadecyl group, and the like.

[0063] As used herein, the term “alkenyl group” refers to a straight or branched chain, monovalent hydrocarbon group having at least one carbon-carbon double bond. Specific examples of the alkenyl group may be a vinyl group, an allyl group, a 2-butenyl group, a 3-pentenyl group, and the like.

[0064] As used herein, the term “alkynyl group” refers to a straight or branched chain, monovalent hydrocarbon group having at least one carbon-carbon triple bond. Specific examples of the alkynyl group may be a propargyl group, a 3-pentynyl group, and the like.

[0065] As used herein, the term “alkoxy group” refers to “alkyl-O—”, wherein the term “alkyl” has the same meaning as described above.

[0066] As used herein, the term “cycloalkyl group” refers to a monovalent group having one or more saturated rings in which all ring members are carbon.

[0067] As used herein, the term “aryl group” refers to an aromatic hydrocarbon containing at least one ring and having the specified number of carbon atoms. The term “aryl” may be construed as including a group with an aromatic ring fused to at least one cycloalkyl ring.

[0068] As used herein, the term “arylalkylene group” refers to an alkylene group substituted with an aryl group.

[0069] As used herein, the term “heteroaryl group” refers to an aryl group containing one to three heteroatoms selected from the group consisting of N, O, S, Si, and P as ring-forming elements, and optionally substituted with one or more substituents where indicated. Examples of heteroaryl groups include, but are not limited to, pyridyl, indolyl, carbazolyl, pyrimidinyl, pyridinyl, pyrazinyl, imidazolyl, oxazolyl, furanyl, thiophenyl, thiazolyl, triazolyl, tetrazolyl, isoxazolyl, quinolinyl, pyrrolyl, pyrazolyl, benz[b]thiophenyl, isoquinolinyl, quinazolinyl, quinoxalinyl, thienyl, isoindolyl, and 5,6,7,8-tetrahydroisoquinoline.

[0070] As used herein, when a definition is not otherwise provided, the term “heteroarylalkylene” refers to an alkylene group substituted with a heteroaryl group.

[0071] As used herein, the terms “alkylene”, “cycloalkylene”, “arylene”, and “heteroarylene” refer to a divalent group respectively derived from an alkyl group, a cycloalkyl group, an aryl group, and a heteroaryl group as defined above.

[0072] As used herein, the term “alkylamine group” refers to —NRR' wherein R and R' are each independently a C1 to C20 alkyl group. As used herein, the term “arylamine group” refers to —NRR' wherein R and R' are each independently a C6 to C30 aryl group.

[0073] As used herein, when a definition is not otherwise provided, “substituted” refers to a group or compound

wherein at least one of the hydrogen atoms thereof is substituted with a halogen atom (F, Cl, Br, or I), a hydroxy group, an alkoxy group, a nitro group, a cyano group, an amino group, an azido group, an amidino group, a hydrazino group, a hydrazono group, a carbonyl group, a carbamyl group, a thiol group, an ester group, a carboxylic acid group or a salt thereof, a sulfonic acid group or a salt thereof, a phosphoric acid group or a salt thereof, a C1 to C20 alkyl group, a C2 to C20 alkenyl group, a C2 to C20 alkynyl group, a C6 to C30 aryl group, a C7 to C30 arylalkyl group, a C1 to C30 alkoxy group, a C1 to C20 heteroalkyl group, a C3 to C20 heteroarylalkyl group, a C3 to C30 cycloalkyl group, a C3 to C15 cycloalkenyl group, a C6 to C15 cycloalkynyl group, a C3 to C30 heterocycloalkyl group, or a combination thereof. “Substituted” is intended to be non-limiting and include inorganic substituents or organic substituents.

[0074] A group or group may also be referred to herein as “unsubstituted” or by equivalent terms such as “non-substituted,” which refers to the original group in which a non-hydrogen moiety does not replace a hydrogen within that group.

[0075] As used herein, when a definition is not otherwise provided, the term “hetero” refers to a compound or group including one to three heteroatoms that are N, O, S, P, and/or Si.

[0076] As used herein, “Group” refers to a group of Periodic Table of the Elements.

[0077] As used herein, “Group II” refers to Group IIA and Group IIB, and examples of Group II metal may be Cd, Zn, Hg, and Mg, but are not limited thereto.

[0078] As used herein, examples of “Group II metal that does not include Cd” refers to a Group II metal except Cd, for example Zn, Hg, Mg, etc.

[0079] As used herein, “Group III” refers to Group IIIA and Group IIIB, and examples of Group III metal can be Al, In, Ga, and Tl, but are not limited thereto.

[0080] As used herein, “Group IV” refers to Group IVA and Group IVB, and examples of a Group IV metal can be Si, Ge, and Sn, but are not limited thereto. As used herein, the term “metal” can include a semi-metal such as Si.

[0081] As used herein, “Group I” refers to Group IA and Group IB, and examples include Li, Na, K, Rb, and Cs, but are not limited thereto.

[0082] As used herein, “Group V” refers to Group VA, and examples include nitrogen, phosphorus, arsenic, antimony, and bismuth, but are not limited thereto.

[0083] As used herein, “Group VI” refers to Group VIA, and examples include sulfur, selenium, and tellurium, but are not limited thereto.

[0084] FIG. 1 is a schematic cross-sectional view of an electroluminescent device 10 according to an embodiment.

[0085] According to an embodiment, an electroluminescent device 10 includes a first electrode 110 and a second electrode 160 facing each other and an emission layer 140 disposed therebetween and including a plurality of quantum dots 141 and a first hole transporting material having a substituted or unsubstituted C4 to C20 alkyl group attached to a backbone structure, a hole transport layer 130 disposed between the first electrode 110 and the emission layer 140 and including a second hole transporting material, a hole injection layer 120 disposed between the first electrode 110 and optionally the hole transport layer 130, and an electron

transport layer **150** disposed between the emission layer **140** and the second electrode **160**.

[0086] In other words, the electroluminescent device **10** has a stack structure wherein the hole injection layer **120**, the hole transport layer **130**, the emission layer **140** and the electron transport layer **150** are disposed between the first electrode **110** and the second electrode **160** facing each other.

[0087] In an embodiment, the first electrode **110** may be directly connected to a driving power source so may function to flow current to the emission layer **140**. The first electrode **110** may include a material having light transmittance in at least a visible light wavelength region, but is not limited thereto. The first electrode **110** may include a material having light transmittance in an infrared or ultraviolet (UV) wavelength region. For example, the first electrode **110** may be an optically transparent material.

[0088] In an embodiment, the first electrode **110** may include molybdenum oxide, tungsten oxide, vanadium oxide, rhenium oxide, niobium oxide, tantalum oxide, titanium oxide, zinc oxide, nickel oxide, copper oxide, cobalt oxide, manganese oxide, chromium oxide, indium oxide, or a combination thereof.

[0089] However, the first electrode **110** according to an embodiment is not necessarily limited thereto but may include a material further having light transmittance with respect to light in an infrared or ultraviolet (UV) wavelength region or a semi-permeable material selectively transmitting light in a particular wavelength region and conduct a function of reflecting light in a visible light wavelength region and turning it back toward the second electrode **160**.

[0090] Meanwhile, in an embodiment, the first electrode **110** may be disposed on the substrate **100** as shown in FIG. 1. The substrate **100** may be a transparent insulating substrate or may be made of a ductile material. The substrate **100** may include glass or a polymer material in a film having a glass transition temperature (T_g) of greater than about 150° C. For example, it includes a COC (cycloolefin copolymer) or COP (cycloolefin polymer) based material.

[0091] In an embodiment, the substrate **100** may support the hole injection layer **120**, the hole transport layer **130**, the emission layer **140**, and the electron transport layer **150** disposed between the first electrode **110** and the second electrode **160**. However, the substrate **100** of the electroluminescent device **10** according to an embodiment may not be disposed under the first electrode **110**, but the substrate **100** may be disposed on the second electrode **160** or may be omitted, as needed.

[0092] The second electrode **160** includes an optically transparent material and may function as a light-transmitting electrode to transmit light generated in the emission layer **140**. In an embodiment, the second electrode **160** may include at least one of silver (Ag), aluminum (Al), copper (Cu), gold (Au), and an alloy thereof, molybdenum oxide, tungsten oxide, vanadium oxide, rhenium oxide, niobium oxide, tantalum oxide, titanium oxide, zinc oxide, nickel oxide, copper oxide, cobalt oxide, manganese oxide, chromium oxide, indium oxide, or a combination thereof.

[0093] However, the second electrode **160** according to an embodiment is not necessarily limited thereto, and may include a semi-permeable material selectively transmitting light in a particular wavelength region, and reflecting a portion of light in another visible light wavelength region back towards the first electrode **110**.

[0094] When the second electrode **160** functions as a reflecting electrode, the first electrode **110** may be a light-transmitting electrode formed of a material capable of transmitting light in at least a visible light wavelength region or a semi-permeable electrode selectively transmitting light in a particular wavelength region.

[0095] Each of the first electrode **110** and the second electrode **160** may be formed by depositing a material for forming an electrode on the substrate **100** or an organic layer by a method such as sputtering.

[0096] On the other hand, as shown in FIG. 1, an electroluminescent device **10** according to an embodiment may have a conventional structure wherein the substrate **100** and each of constituent elements are disposed in the above-described stacking order.

[0097] However, the electroluminescent device **10** according to an embodiment is not necessarily limited thereto and may have various structures within a range of satisfying the aforementioned order of disposing each constituent element. For example, when the substrate **100** is disposed not beneath the first electrode **110** but on the second electrode **160**, the electroluminescent device **10** may have an inverted structure.

[0098] The hole injection layer **120** may be disposed on, for example directly on, the first electrode **110**. The hole injection layer **120** may supply holes into the emission layer **140** through the hole transport layer **130**. However, the hole injection layer **120** is optional and may be omitted considering the thickness and the material of the hole transport layer **130**.

[0099] The hole injection layer **120** may be formed of a p-type semiconductor material or a material doped with a p-type dopant. For example, the hole injection layer **120** may include a [poly(3,4-ethylenedioxythiophene)] (PEDOT) or derivative, a [poly(styrene sulfonate)] (PSS) or derivative, a poly(N-vinylcarbazole) (PVK) or derivative, a poly(phenylenevinylene) or derivative such as a poly(p-phenylenevinylene) (PPV) derivative, a poly((C1 to C6 alkyl) (meth)acrylate) or derivative, a poly(9,9-dioctylfluorene) or derivative, a poly(spiro-fluorene) or derivative, tris(4-carbazol-9-yl-phenyl)amine (TCTA), N,N'-diphenyl-N,N'-bis(3-methylphenyl)-(1,1'-biphenyl)-4,4'-diamine (TPD), N,N'-di(naphthalen-1-yl)-N—N'-diphenyl-benzidine (NPB), tris(3-methylphenylphenylamino)-triphenylamine (m-MTDATA), poly[(9,9-dioctylfluorenyl-2,7-diyl-co(4,4'-(N-4-butylphenyl)diphenylamine)] (TFB), poly(9,9-dioctylfluorene)-co-N,N'-diphenyl-N,N'-di-(p-butylphenyl)-1,4-diaminobenzene (PFB), poly-TPD, a metal oxide such as NiO and MoO₃, or a combination thereof, but is not limited thereto.

[0100] The hole transport layer **130** may be disposed on the first electrode **110**, for example on the first electrode **110** and the hole injection layer **120**. The hole transport layer **130** may provide and transport holes into the emission layer **140**. The hole transport layer **130** may be formed directly under the emission layer **140** and directly contacts the emission layer **140**.

[0101] In an embodiment, the hole transport layer **130** includes a second hole transporting material. The second hole transporting material may be a p-type semiconductor material, or a material doped with a p-type dopant.

[0102] In an embodiment, the second hole transporting material included in the hole transport layer **130** may be a different material from the first hole transporting material of

the emission layer **140** that will be described later. In an embodiment, the second hole transporting material may be a polymer, an oligomer, a metal oxide, or a combination thereof.

[0103] Examples of the second hole transporting material may be a poly(3,4-ethylenedioxythiophene) or derivative, a poly(styrenesulfonate) or derivative, a poly-N-vinylcarbazole or derivative, a polyphenylenevinylene or derivative such as a polyparaphenylenevinylene, a poly(C1 to C6 alkyl)(meth)acrylate) or derivative, a poly(C6 to C40 arylamine) or derivative, a polyaniline or derivative, a polypyrrole or derivative, a poly(9,9-dioctylfluorene) or derivative, for example a poly[(9,9-dioctylfluorenyl-2,7-diyl-co(4,4'-(N-4-butylphenyl)diphenylamine)] or a poly((9,9-dioctylfluorene)-co-N,N-diphenyl-N,N-di-(p-butylphenyl)-1,4-diaminobenzene), a poly(spiro-fluorene) derivative, a poly-(N,N'-diphenyl-N,N'-bis(3-methylphenyl)-(1,1'-biphenyl)-4,4'-diamine) or derivative, NiO, MoO₃, or a combination thereof, but are not limited thereof.

[0104] When the hole transport layer **130** is made of a polymer, an oligomer, a metal oxide, or a combination thereof as the second hole transporting material, life-span of the light emitting device may be increased, and turn-on voltages of the electroluminescent device **10** that are a working initiation voltages may be lowered. Particularly, when the second hole transporting material is selected from the above-mentioned materials, surface morphology of the hole transport layer **130** in direct contact with the emission layer **140** may be uniformly controlled compared with when the monomolecular hole transporting material is used. Accordingly, leakage paths of the holes moving from the hole transport layer **130** to the emission layer **140** can be minimized, so that leakage currents and driving voltages may be lowered.

[0105] For example, the hole transport layer **130** may be formed in a wet coating method such as spin coating and the like. For example, both of the hole transport layer **130** and the emission layer **140** may be formed in a wet coating method. In this way, the hole transport layer **130** and/or the emission layer **140** may be formed in a simple process.

[0106] In addition, in an embodiment, the hole transport layer **130** and the emission layer **140** may be made of materials having relatively different solubilities. For example, the hole transport layer **130** has improved solubility in an aromatic non-polar solvent, and the emission layer **140** has improved solubility in an aliphatic non-polar solvent. When the hole transport layer **130** is dissolved in the aromatic non-polar solvent, the emission layer **140** is dissolved in the aliphatic non-polar solvent, and then a solution process is performed, the emission layer **140** may be formed without surface damage of the previously formed hole transport layer **130**.

[0107] For example, when a TFB polymer film is formed as the hole transport layer **130**, a precursor solution including a TFB precursor polymer and an aromatic non-polar solvent (e.g., toluene, xylene, etc.) is spin-coated on the first electrode **110** or the hole injection layer **120**, thermal treatment is performed in an inert gas atmosphere of N₂ or in a vacuum at a temperature of about 150° C. to about 180° C. for about 30 minutes to form a hole transport layer **130** made of TFB, and the emission layer **140** may be conveniently formed thereon using an aliphatic non-polar solvent (for example, octane, nonane, cyclohexane, or the like) using a solution process.

[0108] In this way, when the solvent selectivity of the hole transport layer **130** and the emission layer **140** is relatively different from each other, both of the hole transport layer **130** and the emission layer **140** may be formed using a solution process, and thus it is possible to perform the process conveniently and to minimize the damage of the surface of the hole transport layer **130** by the organic solvent or the like in the process of forming the subsequent emission layer **140** by different solvent selectivity.

[0109] The emission layer **140** may be disposed on the hole transport layer **130** and the plurality of quantum dots **141** and the first hole transporting material may be included.

[0110] The emission layer **140** is a site where electrons and holes transported by a current supplied from the first electrode **110** and the second electrode **160** are combined to generate excitons, and the generated excitons are transitioned from an excited state to a ground state to emit light in a wavelength corresponding to the size of the quantum dots **141**. That is, the quantum dots **141** may endow the emission layer **140** with an electro-luminescence function.

[0111] Particularly, the quantum dots **141** have a discontinuous energy bandgap by the quantum confinement effect and incident light may be converted into light having a particular wavelength and then radiated by emission of light. Accordingly, the emission layer **140** including the quantum dots **141** may produce light having excellent color reproducibility and color purity.

[0112] For example, the emission layer **140** may emit light in a predetermined wavelength region. The predetermined wavelength region can belong to a visible light region, for example, one among a first wavelength region of about 380 nm to about 488 nm, a second wavelength region of about 490 nm to about 510 nm, a third wavelength region of greater than 510 nm to equal to or less than 580 nm, a fourth wavelength region of about 582 nm to about 600 nm, and a fifth wavelength region of about 620 nm to about 680 nm.

[0113] In an embodiment, materials of the quantum dots **141** are not particularly limited and known or commercially available quantum dots may be used. For example, each of the quantum dots **141** according to an embodiment may include a Group II-VI compound, a Group III-V compound, a Group IV-VI compound, a Group IV element or compound, a Group I-III-VI compound, a Group I-II-IV-VI compound, or a combination thereof.

[0114] For example, each of the quantum dots **141** according to an embodiment may include a Group II-VI compound that does not include Cd, a Group III-V compound, a Group IV-VI compound, a Group IV element or compound, a Group I-III-VI compound, a Group I-II-IV-VI compound that does not include Cd, or a combination thereof. That is, each of the quantum dots **141** according to an embodiment may be a non-cadmium-based quantum dot. Like this, when the quantum dots **141** comprise non-cadmium-based materials, they have reduced toxicity compared with a conventional cadmium-based quantum dots and thus is not as potentially dangerous and is more environmentally friendly.

[0115] The Group II-VI compound may be a binary element compound such as ZnS, ZnSe, ZnTe, ZnO, HgS, HgSe, HgTe, MgSe, MgS, or a combination thereof; a ternary element compound such as ZnSeS, ZnSeTe, ZnSTe, HgSeS, HgSeTe, HgSTe, HgZnS, HgZnSe, HgZnTe, MgZnSe, MgZnS, or a combination thereof; and a quaternary element compound such as HgZnTeS, HgZnSeS, HgZnSeTe, HgZn-

STe, or a combination thereof. The Group II-VI compound may further include a Group III metal.

[0116] The Group III-V compound may be a binary element compound such as GaN, GaP, GaAs, GaSb, AlN, AlP, AlAs, AlSb, InN, InP, InAs, InSb, or a combination thereof; a ternary element compound such as GaNP, GaNAs, GaNSb, GaPAs, GaPSb, AlNP, AlNAs, AlNSb, AlPAs, AlPSb, InNP, InNAs, InNSb, InPAs, InPSb, InZnP, or a combination thereof; and a quaternary element compound such as GaAlNP, GaAlNAs, GaAlNSb, GaAlPAs, GaAlPSb, GaInNP, GaInNAs, GaInNSb, GaInPAs, GaInPSb, InAlNP, InAlNAs, InAlNSb, InAlPAs, InAlPSb, or a combination thereof. The Group III-V compound may further include a Group II metal (InZnP).

[0117] The Group IV-VI compound may be a binary element compound such as AsSnS, SnSe, SnTe, PbS, PbSe, PbTe, or a combination thereof; a ternary element compound such as SnSeS, SnSeTe, SnSTe, PbSeS, PbSeTe, PbSTe, SnPbS, SnPbSe, SnPbTe, or a combination thereof; and a quaternary element compound such as SnPbSSe, SnPbSeTe, SnPbSTe, or a combination thereof. Examples of the Group compound may be CuInSe₂, CuInS₂, CuInGaSe, and CuInGaS, are not limited thereto. Examples of the Group I-II-IV-VI compound may be CuZnSnSe and CuZnSnS, but are not limited thereto. Examples of the Group IV compound may be a single substance such as Si, Ge, or a combination thereof; and a binary element compound such as SiC, SiGe, or a combination thereof.

[0118] The binary element compound, the ternary element compound, or the quaternary element compound respectively can exist in a uniform concentration in the particle or in partially different concentrations in the same particle.

[0119] According to an embodiment, the quantum dots may have a core-shell structure including one semiconductor nanocrystal core particle and another semiconductor nanocrystal shell surrounding the core. The core and the shell may have a concentration gradient wherein the concentration of the element(s) of the shell decreases or increases in a direction towards the core. In addition, the quantum dots may have one semiconductor nanocrystal core and multiple shells surrounding the core. Herein, the multi-layered shell structure has a structure of two or more shells and each layer may have a single composition or an alloy and/or may have a concentration gradient.

[0120] When the quantum dot has a core-shell structure, a material composition of the shell has a larger energy bandgap than that of the core, which may exhibit an effective quantum confinement effect. However, the embodiment is not limited thereto. Meanwhile, in the multi-layered shell, a shell that is outside of the core may have a higher energy bandgap than a shell that is nearer to the core and quantum dots may have an ultraviolet (UV) to infrared wavelength emission ranges.

[0121] The quantum dots may have quantum efficiency of greater than or equal to about 10%, for example, greater than or equal to about 20%, greater than or equal to about 30%, greater than or equal to about 40%, greater than or equal to about 50%, greater than or equal to about 60%, greater than or equal to about 70%, greater than or equal to about 90%, about 100%, or even 100%.

[0122] In a display device, the quantum dots may have a relatively narrow spectrum so as to improve color purity or color reproducibility. The quantum dots may have for example a full width at half maximum (FWHM) at a

photoluminescence wavelength spectrum of less than or equal to about 45 nm, less than or equal to about 40 nm, or less than or equal to or about 30 nm. Within the ranges, color purity or color reproducibility of a display device may be improved.

[0123] The quantum dots may have an average particle diameter (the longest diameter for a non-spherically shaped particle) of about 1 nm to about 100 nm. For example, the quantum dots may have an average particle diameter of about 1 nm to about 20 nm, for example, about 2 nm (or about 3 nm) to about 15 nm.

[0124] In addition, the shapes of the quantum dots may be general shapes in this art and thus may not be particularly limited. For example, the quantum dots may have a spherical, oval, tetrahedral, pyramidal, cuboctahedral, cylindrical, polyhedral, multi-armed, or cube nanoparticle, nanotube, nanowire, nanofiber, nanosheet, or a combination thereof. The quantum dots may have any cross-sectional shape.

[0125] The quantum dots may be commercially available or may be synthesized in any method. For example, several nano-sized quantum dots may be synthesized according to a wet chemical process. In the wet chemical process, precursors react in an organic solvent to grow crystal particles, and the organic solvent or a ligand compound may coordinate the surface of the quantum dot, controlling the growth of the crystal. Examples of the organic solvent and the ligand compound are known.

[0126] The organic solvent coordinated on the surface of the quantum dots may affect stability of a device, and thus excess organic materials that are not coordinated on the surface of the nanocrystals may be removed by pouring it in excessive non-solvent, and centrifuging the resulting mixture. Examples of the non-solvent may be acetone, ethanol, methanol, and the like, but are not limited thereto. After the removal of excess organic materials, the amount of the organic materials coordinated on the surface of the quantum dots may be less than or equal to about 50% by weight, for example, less than or equal to about 30 wt %, less than or equal to about 20 wt %, or less than or equal to about 10 wt % based on a weight of the quantum dots. The organic material may include a ligand compound, an organic solvent, or a combination thereof.

[0127] The electroluminescent device **10** according to an embodiment may further include a ligand (hereinafter, referred to as a hydrophobic ligand) having a hydrophobic moiety bound to the surface of the quantum dots **141**. In an embodiment, the hydrophobic ligand may include a functional group bound to the surface of the quantum dots **141** and a hydrophobic functional group providing hydrophobicity.

[0128] The hydrophobic moiety may be for example a C4 to C20 alkyl group, a C4 to C20 alkenyl group, a C4 to C20 alkynyl group, or a combination thereof and the functional group bound to the surface of the quantum dots **141** may be for example a hydroxy group (—OH), a carboxyl group (—COOH), and the like.

[0129] Examples of the hydrophobic ligand may be fatty acid such as oleic acid, stearic acid, palmitic acid, and the like. When the hydrophobic ligand is included as described, the quantum dots **141** may entirely exhibit non-polarity, and the emission layer **140** including the same may entirely exhibit non-polarity. The quantum dots **141** having the

attached hydrophobic ligand may have solvent selectivity for a non-polar solvent, specifically an aliphatic non-polar solvent.

[0130] In an electroluminescent device **10** according to an embodiment, the emission layer **140** may include the quantum dots **141** in a small amount in order to exhibit excellent luminous efficiency.

[0131] For example the quantum dots **141** may be included in an amount of for example greater than or equal to about 5 wt %, greater than or equal to about 10 wt %, greater than or equal to about 15 wt %, or greater than or equal to about 20 wt %, and less than or equal to about 98 wt %, less than or equal to about 95 wt %, less than or equal to about 90 wt %, less than or equal to about 85 wt %, less than or equal to about 80 wt %, less than or equal to about 75 wt %, less than or equal to about 70 wt %, less than or equal to about 65 wt %, less than or equal to about 60 wt %, less than or equal to about 55 wt %, or less than or equal to about 50 wt %, for example about 5 wt % to about 98 wt %, about 20 wt % to about 98 wt %, about 20 wt % to about 90 wt %, about 20 wt % to about 85 wt %, about 50 wt % to about 85 wt % based on 100 wt % of the emission layer.

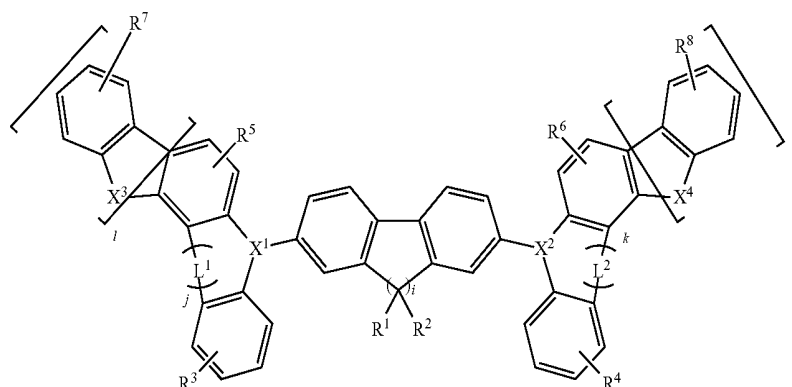
emission layer **140** may have improved surface morphology and may have excellent hole transporting capability due to the first hole transporting material.

[0135] As described, the emission layer **140** and the hole transport layer **130** have solubility in an aliphatic non-polar solvent or an aromatic non-polar solvent, and thus damages to the surface of the hole transport layer **130** may be minimized during the formation of the emission layer **140** and thus the hole transport layer **130** may maintain excellent hole transporting capability.

[0136] In an embodiment, the first hole transporting material may have a substituted or unsubstituted C4 to C20 alkyl group attached to a backbone structure. When the first hole transporting material has a substituted or unsubstituted C4 to C20 alkyl group attached to a backbone structure, the first hole transporting material may be dissolved in a non-polar solvent, specifically an aliphatic non-polar solvent.

[0137] In an embodiment, the first hole transporting material may be a compound represented by Chemical Formula 1.

Chemical Formula 1



[0132] However, an embodiment is not limited thereto, amounts of the quantum dots **141** may be different according to materials of the used quantum dots **141**, kinds of emitted light, amounts of used hydrophobic ligands, and thicknesses of the hole transport layer **130**, the emission layer **140** and/or the electron transport layer **150**.

[0133] On the other hand, the first hole transporting material may improve a hole transporting capability of the emission layer **140**. The first hole transporting material may be a different material from the second hole transporting material of the hole transport layer **130**. The first hole transporting material may be a p-type semiconductor material, or a material doped with a p-type dopant and may be selected from monomolecular to low molecular weight materials, or a combination thereof unlike the second hole transporting material.

[0134] In an embodiment, the first hole transporting material having the substituted or unsubstituted C4 to C20 alkyl group attached to a backbone structure may have solubility in a non-polar solvent, specifically an aliphatic non-polar solvent. In an embodiment, both of the first hole transporting material and the hydrophobic ligand may have solubility in an aliphatic non-polar solvent. Accordingly, when the emission layer **140** is formed using the solution, the formed

[0138] In Chemical Formula 1,

[0139] R^1 to R^8 are each independently a substituted or unsubstituted C4 to C20 alkyl group, a substituted or unsubstituted C3 to C20 cycloalkyl group, a substituted or unsubstituted C6 to C20 aryl group, a substituted or unsubstituted C3 to C20 heteroaryl group, a substituted or unsubstituted C2 to C40 alkylamine group, or a substituted or unsubstituted C6 to C40 arylamine group, provided that at least one of R^1 to R^8 is a substituted or unsubstituted C4 to C20 alkyl group, and

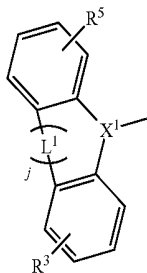
[0140] when R^3 to R^8 are a substituted or unsubstituted C3 to C20 cycloalkyl group, a substituted or unsubstituted C6 to C20 aryl group, or a substituted or unsubstituted C3 to C20 heteroaryl group, they are fused with an adjacent aromatic ring to provide a C8 to C15 fused ring,

[0141] X^1 and X^2 are independently selected from N and $C(-R^a)$, and X^3 and X^4 are independently selected from S, $N-R^b$, and $C(-R^c)(-R^d)$, wherein R^a , R^b , R^c , and R^d are independently selected from a substituted or unsubstituted C1 to C20 alkyl group, a substituted or unsubstituted C3 to C20 cycloalkyl group, a substituted or unsubstituted C6 to C20 aryl group, and a substituted or unsubstituted C3 to C20 heteroaryl group,

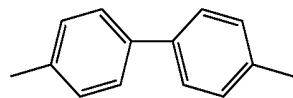
[0142] L^1 and L^2 are independently selected from a single bond and a substituted or unsubstituted methylene group or C2 to C4 alkenylene group, and

[0143] $i, j, k, l,$ and m are independently 0 or 1. When $i, j, k, l,$ or m is 0, the corresponding moiety represented by it is not present. For example, when j is 0,

[0144] the structure

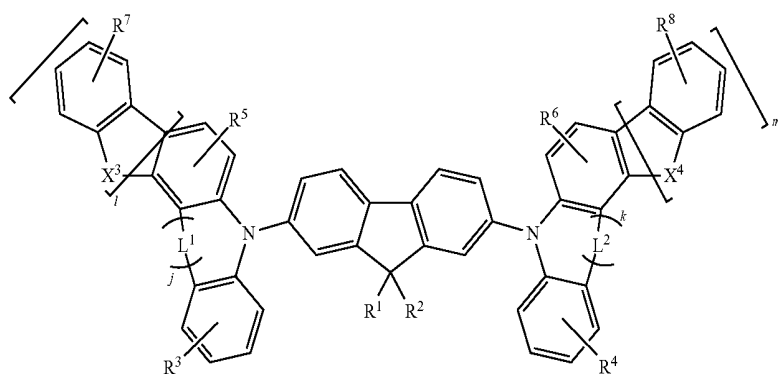


is of the structure



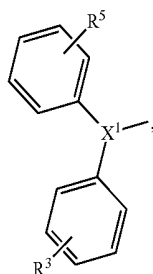
[0146] Since the first hole transporting material includes a compound having a relatively small molecular weight as shown in Chemical Formula 1 and is well mixed with the ligands on the surface of the quantum dots, the emission layer 140 may exhibit improved surface morphology compared with when the quantum dots are included alone and/or the quantum dots and the polymeric/oligomeric hole transporting material are included.

[0147] Specifically, the first hole transporting material may include a compound represented by Chemical Formula 2.

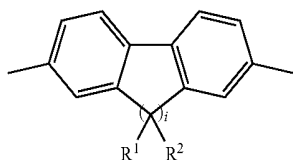


Chemical Formula 2

is of the structure



[0145] and when i is 0, the structure



wherein, in Chemical Formula 2,

[0148] $X^3, X^4, L^1, L^2, j, k, l,$ and m are the same as defined in Chemical Formula 1,

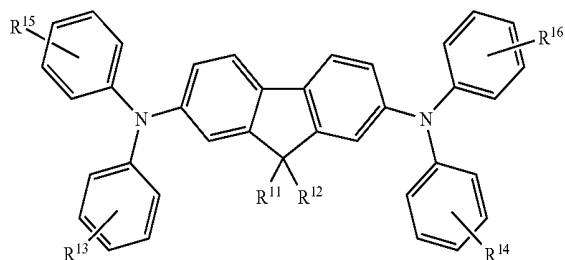
[0149] R^1 to R^8 are each independently a substituted or unsubstituted C4 to C20 alkyl group, a substituted or unsubstituted C3 to C20 cycloalkyl group, a substituted or unsubstituted C6 to C20 aryl group, a substituted or unsubstituted C3 to C20 heteroaryl group, a substituted or unsubstituted C2 to C40 alkylamine group, or a substituted or unsubstituted C6 to C40 arylamine group, provided that at least one of R^1 to R^6 is a substituted or unsubstituted C4 to C20 alkyl group, and

[0150] when R^3 to R^6 are one of a substituted or unsubstituted C3 to C20 cycloalkyl group, a substituted or unsubstituted C6 to C20 aryl group, or a substituted or unsubstituted C3 to C20 heteroaryl group, they are fused with an adjacent aromatic ring to provide a C8 to C40 fused ring.

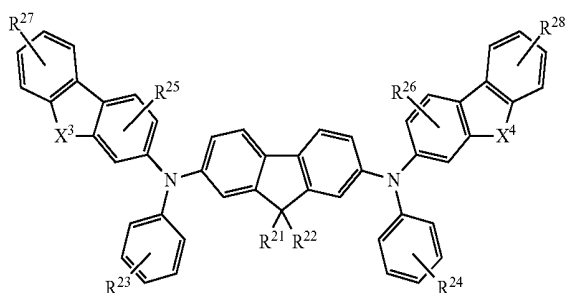
[0151] In Chemical Formula 2, at least two of R^1 to R^6 may be a substituted or unsubstituted C4 to C20 alkyl group. In this case, the solubility of the first hole transporting material in the aliphatic non-polar solvent may be further improved.

[0152] For example, the first hole transporting material may include at least one of compounds represented by Chemical Formula 2-1 to Chemical Formula 2-2.

Chemical Formula 2-1



Chemical Formula 2-2



[0153] In Chemical Formula 2-1 to Chemical Formula 2-2,

[0154] X^3 and X^4 are the same as defined in Chemical Formula 1,

[0155] R^{11} , R^{12} , R^{13} , R^{14} , R^{15} , R^{16} , R^{21} , R^{22} , R^{23} , R^{24} , R^{25} , and R^{26} are each independently a substituted or unsubstituted C4 to C20 alkyl group, a substituted or unsubstituted C3 to C20 cycloalkyl group, a substituted or unsubstituted C6 to C20 aryl group, or a substituted or unsubstituted C3 to C20 heteroaryl group, provided that at least one of R^{11} to R^{14} and at least one of R^{21} to R^{26} are a substituted or unsubstituted C4 to C20 alkyl group,

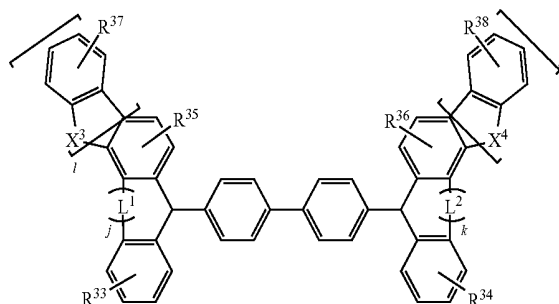
[0156] R^{27} and R^{28} are independently a substituted or unsubstituted C2 to C40 alkylamine group, a substituted or unsubstituted C6 to C40 arylamine group, or a substituted or unsubstituted carbazolyl group, and

[0157] when R^{13} , R^{14} , R^{15} , R^{16} , R^{23} , R^{24} , R^{25} , and R^{26} are one of a substituted or unsubstituted C3 to C20 cycloalkyl group, a substituted or unsubstituted C6 to C20 aryl group,

or a substituted or unsubstituted C3 to C20 heteroaryl group, they are fused with an adjacent aromatic ring to provide a C8 to C40 fused ring.

[0158] On the other hand, the first hole transporting material may include a compound represented by Chemical Formula 3.

Chemical Formula 3



[0159] In Chemical Formula 3,

[0160] X^3 , X^4 , L^1 , L^2 , j , k , l , and m are independently the same as defined in Chemical Formula 1, and

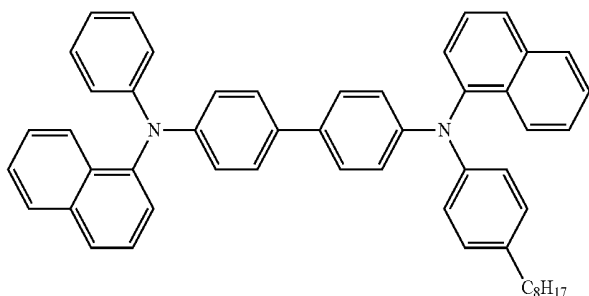
[0161] R^{33} , R^{34} , R^{35} , R^{36} , R^{37} , and R^{38} are each independently a substituted or unsubstituted C4 to C20 alkyl group, a substituted or unsubstituted C3 to C20 cycloalkyl group, a substituted or unsubstituted C6 to C20 aryl group, a substituted or unsubstituted C3 to C20 heteroaryl group, a substituted or unsubstituted C2 to C40 alkylamine group, or a substituted or unsubstituted C6 to C40 arylamine group, provided that at least one of R^{33} to R^{38} is a substituted or unsubstituted C4 to C20 alkyl group, and

[0162] when R^{33} , R^{34} , R^{35} , R^{36} , R^{37} , and R^{38} are one of a substituted or unsubstituted C3 to C20 cycloalkyl group, a substituted or unsubstituted C6 to C20 aryl group, or a substituted or unsubstituted C3 to C20 heteroaryl group, they are fused with an adjacent aromatic ring to provide a C8 to C40 fused ring.

[0163] In Chemical Formula 3, at least two of R^{33} to R^{36} may be an unsubstituted C4 to C10 linear or branched alkyl group. In this case, the solubility of the first hole transporting material in the aliphatic non-polar solvent may be further improved.

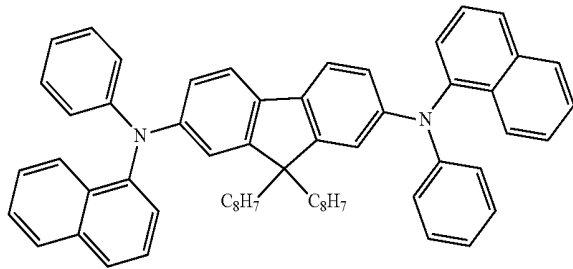
[0164] More specifically, the first hole transporting material may include at least one of compounds represented by Chemical Formula A to Chemical Formula F.

Chemical Formula A

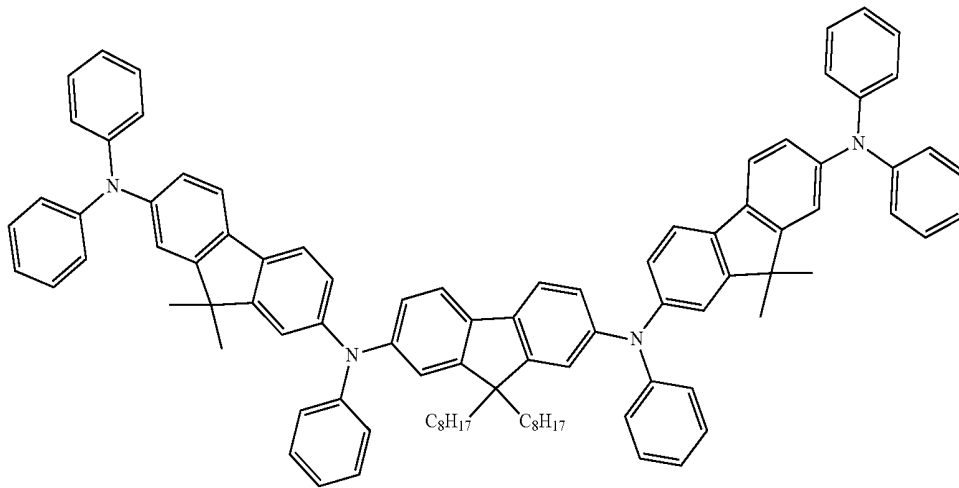


-continued

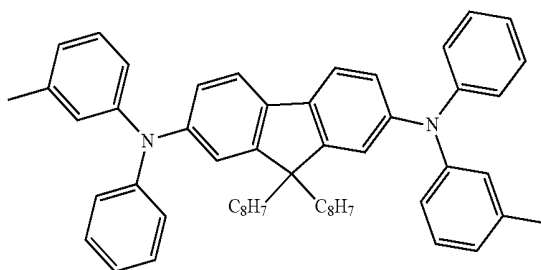
Chemical Formula B



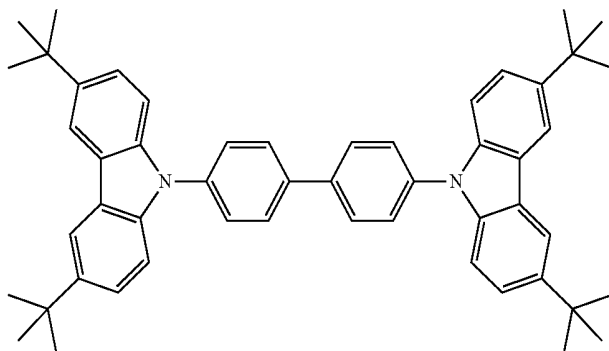
Chemical Formula C



Chemical Formula D

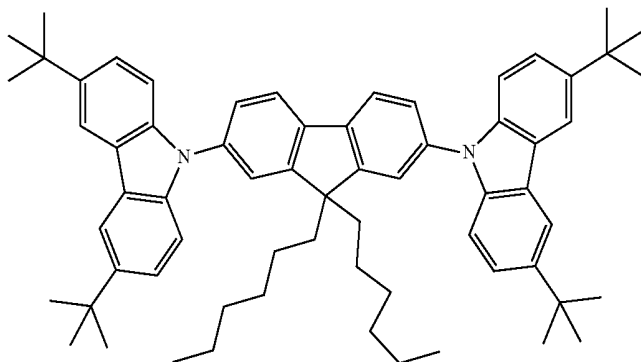


Chemical Formula E



-continued

Chemical Formula F



[0165] Hole transporting materials widely used in electroluminescent devices using quantum dots have a slower hole mobility than electron transporting materials. In order to secure stability, such as the life-span of the quantum dots, an organic ligand is bound to the surface of the quantum dots, and the organic ligand attached to the surface of the quantum dot generally has a very low hole mobility.

[0166] Therefore, at the time of driving the electroluminescent device, electrons and holes may not encounter each other at the center of the emission layer but on the interface with the hole transporting layer or the hole transporting layer. In this case, there is a possibility that the quantum efficiency of the light emitting layer is significantly lowered, and therefore, it is necessary to set the electron/hole carrier balance in the electroluminescent device to an appropriate level.

[0167] Accordingly, a method of forming an emission layer by blending quantum dots with conventional hole transporting materials have been considered. However, since the conventional hole transport materials generally use higher molecular weight materials such as polymers/oligomers, surface morphology may not be uniformly formed when they are blended with quantum dots. If the surface morphology of the emission layer is uneven, cracks, pores, and the like may be generated on the surface of the emission layer. Since the cracks and/or pores act as leakage paths of holes and electrons, leakage currents and turn-on voltages may be increased as the surface morphology becomes uneven and life-span of a device may be largely deteriorated.

[0168] Further, when spin coating a composition obtained by blending quantum dots with conventional hole transporting materials, the composition may not be formed into a uniform thin film and may be pushed out, so that a emission layer may not be formed.

[0169] On the other hand, the electroluminescent device 10 according to an embodiment includes the emission layer 140 including the plurality of quantum dots 141 bound to the hydrophobic ligands and the low molecular weight to monomolecular first hole transporting material represented by Chemical Formula 1.

[0170] As described above, the emission layer 140 composed of the blend of the quantum dots 141 and the low molecular weight to monomolecular first hole transporting material has a superior surface morphology in comparison with a blend of a conventional blend of hole transporting material and quantum dots. Thus, cracks and/or pores on the surface of the emission layer are minimized, thereby reduc-

ing the leakage current and the turn-on voltage, and significantly improving a life-span of the device.

[0171] In addition, the emission layer 140 composed of the blend of the quantum dots 141 and the low molecular to monomolecular first hole transporting material is easily formed into a uniform thin film using a solution process such as spin coating.

[0172] Meanwhile, the electroluminescent device 10 according to an embodiment may be designed such that the emission layer 140 and the hole transport layer 130 have relatively different solvent selectivity. Accordingly, damage to the surface of the hole transport layer 130 may be minimized during the formation of the emission layer 140, which further reduces the leakage current and the turn-on voltage.

[0173] In addition, since the first hole transporting material is included in the emission layer 140, hole injection into the emission layer 140 is facilitated, so that the turn-on of the electroluminescent device 10 may be accelerated, hole carrier injected into the emission layer 140 may be easily adjusted, and the electric field voltage applied to the emission 140 may be lowered to improve luminous efficiency, maximum luminance and life-span.

[0174] An amount of the first hole transport material in the emission layer 140 may be controlled according to the degree of hole/electron transportability of the hole transport layer 130 and the electron transport layer 150 to effectively control the hole/electron carrier balance in the emission layer 140. For example, the first hole transporting material may be for example included in an amount of greater than or equal to about 2 wt %, greater than or equal to about 5 wt %, or greater than or equal to about 10 wt % and for example less than about 50 wt %, for example less than or equal to about 49 wt %, less than or equal to about 45 wt %, less than or equal to about 40 wt %, less than or equal to about 30 wt %, or for example greater than or equal to about 2 wt % and less than about 50 wt %, for example greater than or equal to about 5 wt % and less than about 50 wt %, about 5 wt % to about 40 wt %, about 5 wt % to about 30 wt %, about 5 wt % to about 20 wt % based on a total weight of the emission layer 140.

[0175] When the first hole transporting material is included in the emission layer 140 within the above-described range, overall luminous efficiency and life-span characteristics of the electroluminescent device 10 may be greatly improved.

[0176] The surface morphology of the emission layer **140** according to an embodiment may be confirmed by using atomic force microscopy (AFM). In an embodiment, a root mean square roughness of the emission layer **140** measured by the atomic-force microscopy (AFM) may be for example greater than or equal to about 0.1, greater than or equal to about 0.2, greater than or equal to about 0.3, greater than or equal to about 0.4, greater than or equal to about 0.5, greater than or equal to about 0.6, greater than or equal to about 0.7, greater than or equal to about 0.8, or greater than or equal to about 0.9, and for example less than or equal to about 2.0, or less than or equal to about 1.5, or for example about 0.5 to about 2.0, or about 0.8 to about 1.5.

[0177] That is, when the electroluminescent device **10** according to an embodiment forms the emission layer **140** by blending the quantum dots **140** and the first hole transporting material, the emission layer **140** may have excellent surface morphology as described above.

[0178] However, the method of confirming the surface morphology of the light emitting layer **140** in the electroluminescent device **10** according to an embodiment is not limited to the above-described measuring method. For example, the surface morphology may be measured by using other measurement methods such as a Zygo interferometer for an emission layer including the quantum dots and hole transporting material. In this case, a root mean square roughness range different from the above may be obtained. However, if the root mean square roughness measured by the measuring method according to an embodiment satisfies the above range, the emission layer falls within the scope of the present disclosure.

[0179] In an embodiment, a thickness of the emission layer **140** may be variously selected considering each material, each electron/hole mobility, and each thickness of the hole transport layer **130**, the electron transport layer **150** within the range but may have for example an average thickness of about 15 nm to about 100 nm, about 20 nm to about 60 nm, about 20 nm to about 50 nm, about 20 nm to about 40 nm, or about 25 nm to about 30 nm.

[0180] When the thickness of the emission layer **140** is less than 15 nm, voids, cracks, and the like present in the emission layer **140** can act as leakage paths of electrons/holes to largely deteriorate device characteristics, and it may be difficult to match the carrier balance with other constituent elements of the electroluminescent device.

[0181] On the other hand, when the thickness of the emission layer **140** is greater than 100 nm, it can be difficult to match the electron/hole carrier balance and the current and voltage conditions required for driving become too high, thereby making it difficult to achieve efficient light emission.

[0182] That is, when the thickness range of the emission layer **140** is outside of these ranges, electrons relative to holes may be supplied to the emission layer **140** too rapidly and/or too excessively, and thus electrons may be combined with holes on the interface between the emission layer **140** and the hole transport layer **130** to cause interface light emission or may be transported to the hole injection layer **120** and the hole transport layer **150** and then may be quenched.

[0183] However, the thickness of the emission layer **140** according to an embodiment may be variously adjusted in consideration of the relationship with the materials and thicknesses of the other components. For example, the thickness of the emission layer **140** may be less than or equal

to about 60 nm so as to minimize the field-induced quenching induced by an electric field, by reducing a turn-on voltage and an electric field of the emission layer, in consideration of luminous efficiency of the emission layer **140**, nm or less.

[0184] The electroluminescent device **10** according to an embodiment improves transporting capability of the emission layer **140** and improves hole transport/injection capability through the first hole transport material included in the emission layer **140** in the device. As a result, it is easy to match the hole/electron carrier balance in the device.

[0185] The electron transport layer **150** is disposed between the emission layer **140** and the second electrode **160** and thus transports electrons into the emission layer **140**.

[0186] In an embodiment, an average thickness of the electron transport layer **150** may be variously changed considering charge carrier balance of the hole injection layer **120**, the hole transport layer **130**, and/or the emission layer **140** in the device, but may be for example greater than or equal to about 20 nm, greater than or equal to about 30 nm, greater than or equal to about 40 nm, or greater than or equal to about 50 nm, and for example less than or equal to about 100 nm, less than or equal to about 90 nm, less than or equal to about 80 nm, less than or equal to about 70 nm, or less than or equal to about 60 nm, for example about 20 nm to about 100 nm, about 20 nm to about 90 nm, about 30 nm to about 80 nm, about 40 nm to about 80 nm, or about 60 nm to about 80 nm.

[0187] When the electron transport layer **150** has a thickness outside of these ranges, voids, cracks, and the like of the electron transport layer **150** may have large effect on electron transporting capability to decrease device characteristics largely, and it is difficult to meet a carrier balance with other constituent elements of the electroluminescent device.

[0188] In an embodiment, the electron transport layer **150** may consist of non-light-electron transporting materials that do not emit light by an electric field so that electrons may not be quenched internally.

[0189] On the other hand, the electron transport layer **150** may include inorganic material nanoparticles or may be an organic layer formed by deposition. For example, the electron transport layer **150** may include inorganic nanoparticles, quinolone compounds, triazine compounds, quinoline compounds, triazole compounds, naphthalene compounds, or a combination thereof.

[0190] In an embodiment, the electron transport layer **150** may include inorganic nanoparticles **151**. The inorganic nanoparticles **151** impart an electron transporting property to the electron transport layer **150** and do not exhibit luminescent properties. In an embodiment, the electron transport layer **150** may include at least two inorganic nanoparticles **151**. In an embodiment, the electron transport layer **150** may include a cluster layer composed of at least two inorganic nanoparticles **151**.

[0191] On the other hand, an electron injection layer easing injection of electrons and/or a hole blocking layer blocking movement of holes may be further disposed between the electron transport layer **150** and the second electrode **160**.

[0192] The electron injection layer and the hole blocking layer may have each desirably selected thickness. For example, each thickness may be in a range of greater than or equal to about 1 nm and less than or equal to about 500 nm

but is not limited thereto. The electron injection layer may be an organic layer formed through deposition.

[0193] The electron injection layer may include for example at least one of 1,4,5,8-naphthalene-tetracarboxylic dianhydride (NTCDA), bathocuproine (BCP), tris[3-(3-pyridyl)-mesityl] borane (3TPYMB), LiF, Alq₃, Gaq₃, Inq₃, Znq₂, Zn(BTZ)₂, BeBq₂, ET204 (8-(4-(4,6-di(naphthalen-2-yl)-1,3,5-triazin-2-yl)phenyl)quinolone), 8-hydroxyquinolinato lithium (Liq), n-type metal oxide (e.g., ZnO, HfO₂, etc.), ET204 (8-(4-(4,6-di(naphthalen-2-yl)-1,3,5-triazin-2-yl)phenyl)quinolone), Bphen, ABH113, NET218, NET338, NDN77, NDN87, or a combination thereof, but is not limited thereto.

[0194] The hole blocking layer (HBL) may include for example at least one of 1,4,5,8-naphthalene-tetracarboxylic dianhydride (NTCDA), bathocuproine (BCP), tris[3-(3-pyridyl)-mesityl] borane (3TPYMB), LiF, Alq₃, Gaq₃, Inq₃, Znq₂, Zn(BTZ)₂, BeBq₂, or a combination thereof, but is not limited thereto.

[0195] As described above, the electroluminescent device **10** according to an embodiment may improve hole mobility of the emission layer **140** by including the quantum dots and the first hole transporting material in the emission layer **140**. In addition, the first hole transporting material in the emission layer is a monomolecular to low molecular weight material having a substituted or unsubstituted C4 to C20 alkyl group attached to a backbone structure, and thus a solubility in a non-polar solvent is improved and the formed emission layer may have improved surface morphology when the light emitting layer comprising the plurality of quantum dots and the first hole transporting material are formed using a solution process.

[0196] In addition, according to an embodiment, the emission layer **140** and the hole transport layer **130** may be controlled to have solvent selectivity as described above. Accordingly, because the surface of the hole transport layer **130** is not damaged, the emission layer **140** and the hole transport layer **130** may maintain excellent hole transporting capability.

[0197] In addition, since the first hole transporting material included in the emission layer **140** has a substituted or unsubstituted C4 to C20 alkyl group attached to a backbone structure, it may be dissolved in the aliphatic non-polar solvent together with quantum dots on which hydrophobic ligands are attached. Accordingly, when the emission layer **140** is formed using the solution, surface morphology of the formed emission layer **140** is improved and hole transporting capability is improved due to the first hole transporting material. As a result, since hole transporting capability of the emission layer **140** itself is improved and conductivity of the emission layer **140** is also improved, quenching caused by an electric field of the emission layer **140** may be decreased and thus luminous efficiency, luminance, and life-span of the electroluminescent device **10** may be largely improved.

[0198] Hereinafter, a display device including the electroluminescent device **10** is described.

[0199] A display device according to an embodiment includes a substrate, a driving circuit formed on the substrate, and a first electroluminescent device, a second electroluminescent device, and a third electroluminescent device spaced apart from each other in a predetermined interval and disposed on the driving circuit.

[0200] The first to third electroluminescent devices have the same structure as the electroluminescent device **10** and

but the wavelengths of the lights emitted from each quantum dots may be different from each other.

[0201] In an embodiment, the first electroluminescent device is a red device emitting red light, the second electroluminescent device is a green device emitting green light, and the third electroluminescent device is a blue device emitting blue light. In other words, the first to third electroluminescent devices may be pixels expressing red, green, and blue, respectively, in the display device.

[0202] However, an embodiment is not necessarily limited thereto, but the first to third electroluminescent devices may respectively express magenta, yellow, cyan, or may express other colors.

[0203] One of the first to third electroluminescent devices may be the electroluminescent device **10**. In this case, the third electroluminescent device displaying at least blue may be desirably the electroluminescent device **10**.

[0204] In the display device according to an embodiment, a hole injection layer, a hole transport layer, an electron transport layer, an electron injection layer, and a hole blocking layer except an emission layer of each pixel may be integrated to form a common layer. However, an embodiment is not limited thereto. A hole injection layer, a hole transport layer, an electron transport layer, an electron injection layer, and a hole blocking layer may be independently formed in each pixel of the display device, or at least one of a hole injection layer, a hole transport layer, an electron transport layer, an electron injection layer, and a hole blocking layer may form a common layer and remaining layers may form a separate independent layer.

[0205] The substrate may be a transparent insulating substrate or may be made of a ductile material. The substrate may include glass or a polymer material in a film having a glass transition temperature (T_g) of greater than about 150° C. For example, it includes a COC (cycloolefin copolymer) or COP (cycloolefin polymer) material. All the first to third electroluminescent devices are formed on the substrate. That is, a substrate of the display device according to an embodiment provides a common layer.

[0206] The driving circuit is disposed on the substrate and is independently connected to each of the first to third electroluminescent devices. The driving circuit may include at least one kind of line including a scan line, a data line, a driving power source line, a common power source line, and the like, at least two of thin film transistors (TFT) connected to the wire and corresponding to one organic light emitting diode, and at least one capacitor, or the like. The driving circuit may have a variety of the known structures.

[0207] As described above, a display device according to an embodiment may exhibit improved device efficiency and thus excellent photoluminescence characteristics.

[0208] Hereinafter, the embodiments are illustrated in more detail with reference to examples. However, these examples are exemplary, and the present disclosure is not limited thereto.

EXAMPLES

Preparation Example 1

[0209] 5×10⁻⁵ millimoles (mmol) of red quantum dots (InP, average particle diameter: 9 nm) on which oleic acid is attached as a hydrophobic ligand and 2.66 mmol of a compound represented by Chemical Formula D (DOFL-

TPD) are put in 10 mL of octane and stirred for 5 minutes, preparing a composition for an emission layer.

[0210] The compound represented by Chemical Formula D is included in an amount of 5 wt % based on a total weight of the quantum dots and the compound represented by Chemical Formula D.

Preparation Example 2

[0211] A composition for an emission layer is prepared according to the same method as Preparation Example 1 except that the amount of the compound represented by Chemical Formula D is adjusted into 10 wt % based on a total weight of the quantum dots and the compound represented by Chemical Formula D.

Preparation Example 3

[0212] A composition for an emission layer is prepared according to the same method as Preparation Example 1 except that the amount of the compound represented by Chemical Formula D is adjusted into 15 wt % based on a total weight of the quantum dots and the compound represented by Chemical Formula D.

Preparation Example 4

[0213] A composition for an emission layer is prepared according to the same method as Preparation Example 1 except that the amount of the compound represented by Chemical Formula D is adjusted into 20 wt % based on a total weight of the quantum dots and the compound represented by Chemical Formula D.

Preparation Example 5

[0214] 3.33×10^{-5} mmol of blue quantum dots (ZnSeTe, average particle diameter: 13 nm) on which oleic acid is attached as a hydrophobic ligand and 2.66 mmol of a compound represented by Chemical Formula D (DOFL-TPD) are put in 10 mL of octane and stirred for 5 minutes, preparing a composition for an emission layer.

[0215] The compound represented by Chemical Formula D is included in an amount of 15 wt % based on a total weight of the quantum dots and the compound represented by Chemical Formula D.

Preparation Example 6

[0216] A composition for an emission layer is prepared according to the same method as Preparation Example 1 except using 3.64 mmol of the compound represented by Chemical Formula B (DOFL-NPB) instead of the compound represented by Chemical Formula D (DOFL-TPD) and adjusting the amount of the compound represented by Chemical Formula B into 5 wt % based on a total weight of the quantum dots and the compound represented by Chemical Formula B.

Preparation Example 7

[0217] A composition for an emission layer is prepared according to the same method as Preparation Example 6 except that the amount of the compound represented by Chemical Formula B is adjusted into 10 wt % based on a total weight of the quantum dots and the compound represented by Chemical Formula B.

Preparation Example 8

[0218] A composition for an emission layer is prepared according to the same method as Preparation Example 6 except that the amount of the compound represented by Chemical Formula B is adjusted into 15 wt % based on a total weight of the quantum dots and the compound represented by Chemical Formula B.

Preparation Example 9

[0219] A composition for an emission layer is prepared according to the same method as Preparation Example 6 except that the amount of the compound represented by Chemical Formula B is adjusted into 20 wt % based on a total weight of the quantum dots and the compound represented by Chemical Formula B.

Preparation Example 10

[0220] A composition for an emission layer is prepared according to the same method as Preparation Example 1 except that the amount of the compound represented by Chemical Formula D is adjusted into 30 wt % based on a total weight of the quantum dots and the compound represented by Chemical Formula D.

Preparation Example 11

[0221] A composition for an emission layer is prepared according to the same method as Preparation Example 6 except that the amount of the compound represented by Chemical Formula B is adjusted into 40 wt % based on a total weight of the quantum dots and the compound represented by Chemical Formula B.

Comparative Preparation Example 1

[0222] 5×10^{-5} mmol of red quantum dots (InP, an average particle diameter: 9 nm) on which oleic acid is attached as a hydrophobic ligand are put in 10 mL of octane and stirred for 5 minutes, preparing a composition for an emission layer.

Comparative Preparation Example 2

[0223] 3.33×10^{-5} mmol of blue quantum dots (ZnSeTe, an average particle diameter: 13 nm) on which oleic acid is attached as a hydrophobic ligand are added to 10 mL of octane and stirred for 5 minutes, preparing a composition for an emission layer.

Comparative Preparation Example 3

[0224] A composition for an emission layer is prepared according to the same method as Preparation Example 6 except that the amount of the compound represented by Chemical Formula B is adjusted into 50 wt % based on a total weight of the quantum dots and the compound represented by Chemical Formula B.

Comparative Preparation Example 4

[0225] A composition for an emission layer is prepared according to the same method as Preparation Example 1 except that the amount of the compound represented by Chemical Formula D is adjusted into 50 wt % based on a total weight of the quantum dots and the compound represented by Chemical Formula D.

Evaluation 1: Surface Morphology of Emission Layer

[0226] The compositions for an emission layer according to Preparation Examples 3 and 5 and Comparative Preparation Examples 1 and 2 are respectively spin-coated on a glass substrate, thermally treated at 80° C. for 30 minutes to form each emission layer thin film having an average thickness of about 25 nm.

[0227] Subsequently, surface morphology of each emission layer thin film is measured through atomic-force microscopy (AFM), and the results are shown in FIGS. 2 to 5.

[0228] FIGS. 2 to 5 are atomic-force microscopic (AFM) images showing surface morphology of the emission layer thin films (Comparative Preparation Example 1 (FIG. 2), Preparation Example 3 (FIG. 3), Comparative Preparation Example 2 (FIG. 4), and Preparation Example 5 (FIG. 5)).

[0229] In FIGS. 2 to 5, each image has each width scale corresponding to 5 μm, and herein, as an image shows a brighter color, it is positioned relatively upper, but as it shows a darker color, it is positioned relatively lower.

[0230] Referring to FIGS. 2 to 5, the emission layer thin films in which a hole transporting material is blended based on the same kind of quantum dots according to Preparation Examples 3 and 5 show lower root mean square roughness (RMS) compared with those according to Comparative Preparation Examples 1 and 2 including no hole transporting material.

[0231] The results of FIGS. 2 to 5 show that an emission layer formed by blending a hole transporting material with quantum dots according to embodiment shows excellent surface morphology compared with an emission layer including only the quantum dots.

Evaluation 2: Hole Transporting Capability Evaluation of HOD

[0232] The compositions for an emission layer according to Preparation Examples 2 to 3 and 6 to 8 and Comparative Preparation Example 1 are respectively used to manufacture HOD (Hole Only Device). HOD may be manufactured by respectively spin-coating a solution for a hole injection layer prepared by dissolving PEDOT in water and a solution for a hole transport layer prepared by dissolving TFB in toluene on a patterned ITO electrode to sequentially form a hole injection layer and a hole transport layer, coating and drying a composition for an emission layer thereon to form an emission layer, depositing a material blocking holes passing the emission layer on the emission layer, and finally forming an Al electrode. The manufactured HOD may effectively sense only hole transporting capability.

[0233] Subsequently, after applying a voltage of 5 V and 8 V to HOD, current density measured in each emission layer is shown in Table 1.

TABLE 1

Applied Voltage	Preparation Example 2	Preparation Example 3	Preparation Example 6	Preparation Example 7	Preparation Example 8	Comparative Preparation Example 1
5 V	0.08 mA/cm ²	0.67 mA/cm ²	0.06 mA/cm ²	0.47 mA/cm ²	0.77 mA/cm ²	0.01 mA/cm ²
8 V	2.32 mA/cm ²	10.1 mA/cm ²	3.50 mA/cm ²	9.63 mA/cm ²	15.96 mA/cm ²	0.025 mA/cm ²

[0234] Referring to Table 1, HOD's manufactured by using the compositions for an emission layer according to

the Preparation Examples show improved current density compared with HOD manufactured by using the compositions for an emission layer according to Comparative Preparation Example 1.

[0235] On the other hand, when the same kind of hole transporting material (comparison of Preparation Examples 2 and 3 and comparison of Preparation Examples 6 to 8) is used, as an amount of the hole transporting material is increased, current density also increases.

[0236] However, when different kinds of hole transporting materials (comparison of Preparation Examples 2 to 3 and Preparation Examples 6 to 8) is used, current density also becomes different.

[0237] Referring to the result of Table 1, HOD's according to Preparation Examples show much improved hole transporting capability through the emission layer formed by blending quantum dots and a hole transporting material.

Evaluation 3: Surface Characteristics of Emission Layer Depending on Content of First Hole Transport Material

[0238] The compositions for an emission layer according to Preparation Examples 10 to 11 and Comparative Preparation Examples 3 to 4 are respectively coated and dried on a glass substrate to form emission layer thin films, the surface of each emission layer thin films is measured by using a scanning electron microscope, and the results are shown in FIGS. 6 to 9.

[0239] FIGS. 6 to 9 are scanning electron microscopic images of the emission layer thin films (Comparative Preparation Example 3 (FIG. 6), Comparative Preparation Example 4 (FIG. 7), Preparation Example 10 (FIG. 8), and Preparation Example 11 (FIG. 9)).

[0240] Referring to FIGS. 6 to 9, the emission layers according to Preparation Examples 10 to 11 show a relatively uniform surface distribution, but when a first hole transporting material is excessively included, a phase separation may occur as shown in Comparative Preparation Examples 3 to 4.

[0241] Accordingly, referring to the result of Evaluation 3, the electroluminescent devices according to Examples include a first hole transporting material in an emission layer within the above range and thus may prevent a phase separation on the surface of the emission layer and secure excellent surface roughness.

Example 1

[0242] A glass substrate deposited with ITO as a first electrode (an anode) is surface-treated with UV-ozone for 15 minutes, a hole injection layer having an average thickness of 30 nm is formed thereon by spin-coating a PEDOT:PSS solution (H.C. Starks) and thermally treating it at 150° C. for 10 minutes under an air atmosphere and then, at 150° C. for 10 minutes under a N₂ atmosphere.

[0243] Subsequently, a hole transport layer having an average thickness of 25 nm is formed on the hole injection

layer by spin-coating a solution for a hole transport layer prepared by dissolving poly[(9,9-dioctylfluorene-2,7-diyl)-co-(4,4'-(N-4-butylphenyl)diphenylamine)] (TFB) (Sumitomo) in toluene and thermally treating it at 150° C. for 30 minutes.

[0244] Subsequently, the composition for an emission layer according to Preparation Example 1 is spin-coated on the hole transport layer and heated at 80° C. to form a red emission layer (red light emitting layer) having an average thickness of 25 nm.

[0245] On the red emission layer, an electron transport layer having an average thickness of 80 nm is formed by spin-coating a solution for an electron transport layer in which ZnO is dispersed in ethanol and then, thermally treating it at 80° C. for 30 minutes.

[0246] Subsequently, a second electrode is formed by vacuum-depositing aluminum (Al) to an average thickness of 90 nm on the electron transport layer to manufacture an electroluminescent device according to Example 1.

Example 2

[0247] An electroluminescent device according to Example 2 is manufactured according to the same method as Example 1, except that the composition for an emission layer according to Preparation Example 2 is used instead of the composition for an emission layer according to Preparation Example 1.

Example 3

[0248] An electroluminescent device according to Example 3 is manufactured according to the same method as Example 1, except that the composition for an emission layer according to Preparation Example 3 is used instead of the composition for an emission layer according to Preparation Example 1.

Example 4

[0249] An electroluminescent device according to Example 4 is manufactured according to the same method as Example 1, except that the composition for an emission layer according to Preparation Example 4 is used instead of the composition for an emission layer according to Preparation Example 1.

Example 5

[0250] An electroluminescent device according to Example 5 is manufactured according to the same method as Example 1, except that the composition for an emission layer according to Preparation Example 2 is used instead of the composition for an emission layer according to Preparation Example 1 and the electron transport layer is formed with an average thickness of 60 nm.

Example 6

[0251] An electroluminescent device according to Example 6 is manufactured according to the same method as Example 1, except that the composition for an emission layer according to Preparation Example 3 is used instead of the composition for an emission layer according to Preparation Example 1 and the electron transport layer is formed with an average thickness of 60 nm.

Example 7

[0252] An electroluminescent device according to Example 7 is manufactured according to the same method as Example 1, except that the composition for an emission layer according to Preparation Example 3 is used instead of the composition for an emission layer according to Preparation Example 1, the emission layer is formed with an average thickness of 30 nm, and the electron transport layer is formed with an average thickness of 60 nm.

Example 8

[0253] An electroluminescent device according to Example 8 is manufactured according to the same method as Example 1, except that the composition for an emission layer according to Preparation Example 3 is used instead of the composition for an emission layer according to Preparation Example 1 and the emission layer is formed with an average thickness of 30 nm.

Example 9

[0254] An electroluminescent device according to Example 9 is manufactured according to the same method as Example 1, except that the composition for an emission layer according to Preparation Example 6 is used instead of the composition for an emission layer according to Preparation Example 1.

Example 10

[0255] An electroluminescent device according to Example 10 is manufactured according to the same method as Example 1, except that the composition for an emission layer according to Preparation Example 7 is used instead of the composition for an emission layer according to Preparation Example 1.

Example 11

[0256] An electroluminescent device according to Example 11 is manufactured according to the same method as Example 1, except that the composition for an emission layer according to Preparation Example 8 is used instead of the composition for an emission layer according to Preparation Example 1.

Example 12

[0257] An electroluminescent device according to Example 12 is manufactured according to the same method as Example 1, except that the composition for an emission layer according to Preparation Example 9 is used instead of the composition for an emission layer according to Preparation Example 1.

Example 13

[0258] An electroluminescent device according to Example 13 is manufactured according to the same method as Example 1, except that the composition for an emission layer according to Preparation Example 7 is used instead of the composition for an emission layer according to Preparation Example 1 and the electron transport layer is formed with an average thickness of 60 nm.

Example 14

[0259] An electroluminescent device according to Example 14 is manufactured according to the same method as Example 1, except that the composition for an emission layer according to Preparation Example 8 is used instead of the composition for an emission layer according to Preparation Example 1 and the electron transport layer is formed with an average thickness of 60 nm.

Comparative Example 1

[0260] An electroluminescent device according to Comparative Example 1 is manufactured according to the same

and same thickness of an electron transport layer of FIG. 10, and Examples 9 to 12 of FIG. 11).

[0265] Referring to the results of FIGS. 10 and 11, the electroluminescent devices according to Examples show improved hole transporting capability compared with those according to Comparative Examples, and as an amount of the hole transporting material is increased in the emission layer, the hole transporting capability is gradually improved.

Evaluation 5: Relationship of Average Thickness of Electron Transport Layer and Device Characteristics

[0266] Device characteristics of the electroluminescent devices according to Examples 2, 6, 11, 13 and Comparative Examples 1 and 2 are measured and shown in Table 2.

TABLE 2

	Max. EQE	EQE @ 100 nt	EQE @ 500 nt	EQE @ 1000 nt	Max Current efficiency (Cd/A)	Driving Voltage (V) @ 5 mA	Luminance @ 5 mA (Cd/m ²)	Lamda max. (nm)	FWHM (nm)	CIE x	CIE y	Max Luminance (Cd/m ²)
Example 2	3.6	2.3	3.3	3.6	4.5	2.6	175	627	37	0.6830	0.3150	17240
Example 6	4.1	2.8	3.8	4.0	5.3	2.8	220	626	37	0.6820	0.3161	16230
Example 11	3.5	2.6	3.3	3.5	4.3	2.7	178	627	37	0.6850	0.3140	14040
Example 13	5.2	3.7	4.9	5.1	6.6	2.8	301	626	37	0.6820	0.3160	10780
Comparative Example 1	3.8	2.2	3.7	3.6	4.7	3.0	182	627	37	0.6840	0.3140	6850
Comparative Example 2	4.2	3.0	3.9	4.1	5.3	2.8	228	627	37	0.6830	0.3160	7170

method as Example 1, except that the composition for an emission layer according to Comparative Preparation Example 1 is used instead of the composition for an emission layer according to Preparation Example 1.

Comparative Example 2

[0261] An electroluminescent device according to Comparative Example 2 is manufactured according to the same method as Example 1, except that the composition for an emission layer according to Comparative Preparation Example 2 is used instead of the composition for an emission layer according to Preparation Example 1 and the electron transport layer is formed with an average thickness of 60 nm.

Evaluation 4: Voltage-Current Density Relationship Depending on Content of Hole Transporting Material in Emission Layer

[0262] Voltage-current density relationship of the electroluminescent devices according to Examples 1 to 4 and Comparative Example 1 and of the electroluminescent devices according to Examples 9 to 12 and Comparative Example 2 are measured and respectively shown in FIGS. 10 and 11.

[0263] FIG. 10 is a graph showing voltage-current density (log scale) characteristics of the electroluminescent devices according to Examples 1 to 4 and Comparative Example 1 and FIG. 11 is a graph showing voltage-current density (log scale) characteristics of the electroluminescent devices according to Examples 9 to 12 and Comparative Example 2.

[0264] Referring to FIGS. 10 and 11, a turn-on voltage of a device is gradually lower, as an amount of a hole transporting material is increased in an emission layer under the predetermined conditions (i.e., same kind of emission layer

[0267] Referring to Table 2, based on the average thickness of the same kind of electron transport layers (comparison of Examples 2 and 11 and Comparative Example 1 and comparison of Examples 6 and 13 and Comparative Example 2), specific device characteristics may be a little different depending on a kind of hole transporting material included in an emission layer, but Examples show remarkably excellent maximum luminance (Max luminance) compared with at least Comparative Examples. On the other hand, based on the same hole transporting material (comparison of Examples 2 and 6 and comparison of Examples 11 and 13), device characteristics such as external quantum efficiency (EQE), maximum luminance (Max luminance), or the like may be different depending on an average thickness of the electron transport layer (ETL). The unit “nt” means “nit” and is equivalent to Cd/m².

[0268] On the other hand, life-span characteristics of the electroluminescent devices according to Examples 2, 5, 11, and 14 and Comparative Examples 1 and 2 are respectively evaluated and the results are shown in Table 3 and FIG. 8.

[0269] FIG. 12 is a graph showing life-span characteristics of the electroluminescent devices according to Examples 2, 5, 11, and 14 and Comparative Examples 1 and 2.

TABLE 3

	T95 (h)	T50 (h)
Example 2	0.09	greater than 1,000
Example 5	0.09	greater than 1,000
Example 11	154.91	about 700
Example 14	34.35	greater than 1,000
Comparative Example 1	0.03	4.8
Comparative Example 2	0.03	0.9

[0270] T95 indicates the time (h) elapsed until the luminance is 95% of an initial luminance (100%), and T50 indicates the time (h) elapsed until the luminance is 50% of an initial luminance (100%).

[0271] Referring to FIG. 12 and Table 3, based on the same thickness of the electron transport layers (comparison of Examples 2 and 11 and Comparative Example 1 and comparison of Examples 5 and 14 and Comparative Example 2), the electroluminescent devices according to Examples show excellent T50 and T95 compared with those of Comparative Examples. On the other hand, based on the same hole transporting material (comparison of Examples 2 and 5 with Comparative Example 1, comparison of Examples 11 and 14 with Comparative Example 2), life-span characteristics may also be different depending on an average thickness of an electron transport layer (particularly, referring to Examples 11 and 14).

[0272] Accordingly, referring to the result of Evaluation 5, the electron transport layer may have a different optimal average thickness depending on a kind of a hole transporting material included in an emission layer.

Evaluation 6: Relationship Between Average Thickness of Electron Transport Layer and Emission Layer and Device Characteristics

[0273] Device characteristics of the electroluminescent devices according to Examples 3, 6, 7, and 8 and Comparative Examples 1 and 2 are measured, and the results are shown in Table 4.

TABLE 4

	Max. EQE	EQE @ 100 nt	EQE @ 500 nt	EQE @ 1000 nt	Max Current efficiency (Cd/A)	Driving Voltage (V) @ 5 mA	Luminance @ 5 mA (Cd/m ²)	Lamda max. (nm)	FWHM (nm)	CIE x	CIE y	Max Luminance (Cd/m ²)
Example 3	3.6	2.3	3.3	3.6	4.5	2.6	175	627	37	0.6830	0.3150	17240
Example 6	4.1	2.8	3.8	4.0	5.3	2.8	220	626	37	0.6820	0.3161	16230
Example 7	2.8	2.2	2.6	2.8	3.6	2.7	149	626	37	0.6820	0.3160	15510
Example 8	2.8	2.4	2.7	2.8	3.4	2.7	156	628	38	0.6850	0.3140	19560
Comparative Example 1	3.8	2.2	3.7	3.6	4.7	3.0	182	627	37	0.6840	0.3140	6850
Comparative Example 2	4.2	3.0	3.9	4.1	5.3	2.8	228	627	37	0.6830	0.3160	7170

[0274] Referring to Table 4, based on the same average thickness of the electron transport layers (comparison of Examples 3 and 8 with Comparative Example 1 and comparison of Examples 6 and 7 with Comparative Example 2), maximum luminance depending on the average thickness of the emission layer may be opposite each other. In other words, as for Examples 3 and 8, as the average thickness of the emission layer is increased, the maximum luminance increases, but as for Examples 6 and 7, the maximum luminance rather decreases with increased emission layer thickness. On the other hand, life-span characteristics of the electroluminescent devices according to Examples 3, 6, 7, and 8 and Comparative Examples 1 and 2 are respectively evaluated, and the results are shown in Table 5 and FIG. 13.

[0275] FIG. 13 is a graph showing life-span characteristics of the electroluminescent devices according to Comparative Examples 1 to 2 and Examples 3, 6, 7, and 8.

TABLE 5

	T95 (h)	T50 (h)
Example 3	0.09	greater than 1,000
Example 6	0.09	greater than 1,000
Example 7	0.07	greater than 1,000
Example 8	1.02	greater than 1,000
Comparative Example 1	0.03	4.8
Comparative Example 2	0.03	0.9

[0276] Referring to FIG. 13 and Table 5, based on the same thickness of the electron transport layers (comparison of Examples 3 and 8 with Comparative Example 1 and comparison of Examples 6 and 7 with Comparative Example 2), the electroluminescent device according to Examples show excellent T50 and T95 compared with those according to Comparative Examples. On the other hand, based on the same hole transporting material and the same average thickness of the electron transport layers (comparison of Examples 6 and 7 and comparison of Examples 3 and 8) and particularly, referring to T95 of Examples 7 and 8, life-span characteristics may be different, as a thickness of the emission layer is changed. However, life-span characteristics of Examples 3, 6, 7, and 8 show excellent T50 of greater than 1,000 hours.

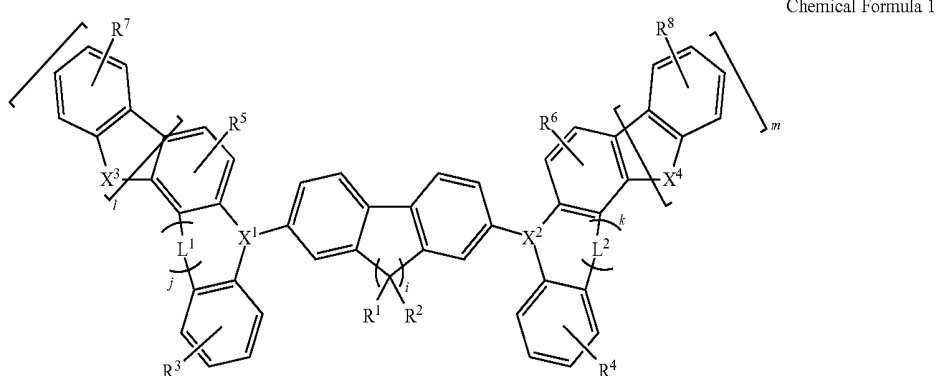
[0277] Accordingly, referring to the result of Evaluation 6, an average thickness of the emission layer has an influence on device characteristics, and accordingly, the device characteristics may be adjusted by controlling an average thickness of the electron transport layer and an average thickness of the emission layer.

[0278] While this disclosure has been described in connection with what is presently considered to be practical example embodiments, it is to be understood that the invention is not limited to the disclosed embodiments, but, on the contrary, is intended to cover various modifications and equivalent arrangements included within the spirit and scope of the appended claims.

What is claimed is:

1. An electroluminescent device, comprising a first electrode and a second electrode facing each other; an emission layer disposed between the first electrode and the second electrode and comprising a plurality of quantum dots, and a first hole transporting material comprising a substituted or unsubstituted C4 to C20 alkyl group attached to a backbone structure; a hole transport layer disposed between the emission layer and the first electrode and comprising a second hole transporting material; and an electron transport layer disposed between the emission layer and the second electrode.

2. The electroluminescent device of claim 1, wherein the first hole transporting material comprises a compound represented by Chemical Formula 1:

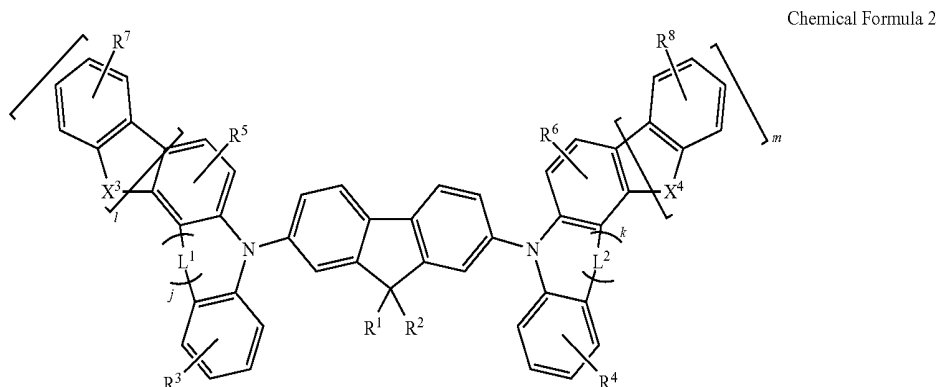


wherein, in Chemical Formula 1,
 R^1 to R^8 are each independently a substituted or unsubstituted C4 to C20 alkyl group, a substituted or unsubstituted C3 to C20 cycloalkyl group, a substituted or unsubstituted C6 to C20 aryl group, a substituted or unsubstituted C3 to C20 heteroaryl group, a substituted or unsubstituted C2 to C40 alkylamine group, or a substituted or unsubstituted C12 to C40 arylamine group, provided that at least one of R^1 to R^8 is a substituted or unsubstituted C4 to C20 alkyl group, and when R^3 to R^8 are each independently a substituted or unsubstituted C3 to C20 cycloalkyl group, a substituted or unsubstituted C6 to C20 aryl group, or a substituted or unsubstituted C3 to C20 heteroaryl group, they are fused with an adjacent aromatic ring to provide a C8 to C15 fused ring,

X^1 and X^2 are each independently N or C($-R^a$), and X^3 and X^4 are each independently S, N- R^b , or C($-R^c$) ($-R^d$), wherein R^a , R^b , R^c , and R^d are each a substituted or unsubstituted C1 to C20 alkyl group, a substituted or unsubstituted C3 to C20 cycloalkyl group, a substituted or unsubstituted C6 to C20 aryl group, or a substituted or unsubstituted C3 to C20 heteroaryl group,

L^1 and L^2 are each independently a single bond, a substituted or unsubstituted methylene group, or a substituted or unsubstituted C2 to C4 alkenylene group, and i , j , k , l , and m are each independently 0 or 1.

3. The electroluminescent device of claim 2, wherein the first hole transporting material comprises a compound represented by Chemical Formula 2:



wherein, in Chemical Formula 2,
 X^3 , X^4 , L^2 , j , k , l , and m are the same as defined in
 Chemical Formula 1 of claim 2,

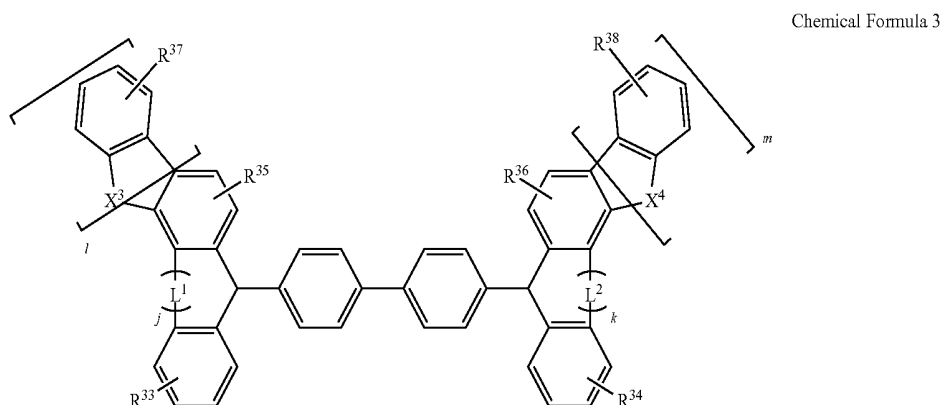
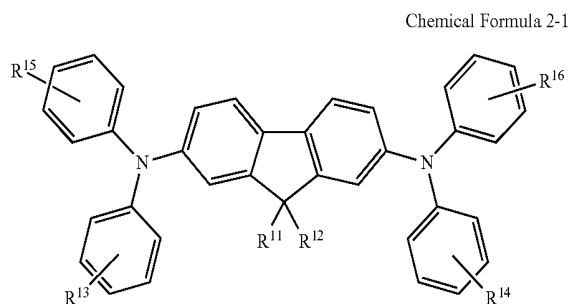
R^1 to R^8 are each independently a substituted or unsubstituted C4 to C20 alkyl group, a substituted or unsubstituted C3 to C20 cycloalkyl group, a substituted or unsubstituted C6 to C20 aryl group, a substituted or unsubstituted C3 to C20 heteroaryl group, a substituted or unsubstituted C2 to C40 alkylamine group, or a substituted or unsubstituted C12 to C40 arylamine group, provided that

at least one of R^1 to R^6 is a substituted or unsubstituted C4 to C20 alkyl group, and

when R^3 to R^6 are one of a substituted or unsubstituted C3 to C20 cycloalkyl group, a substituted or unsubstituted C6 to C20 aryl group, or a substituted or unsubstituted C3 to C20 heteroaryl group, they are fused with an adjacent aromatic ring to provide a C8 to C40 fused ring.

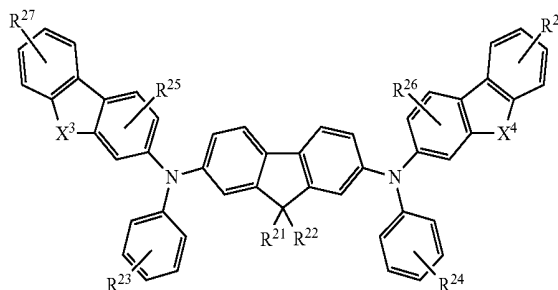
4. The electroluminescent device of claim 3, wherein at least two of groups R^1 to R^6 are a substituted or unsubstituted C4 to C20 alkyl group.

5. The electroluminescent device of claim 3, wherein the first hole transporting material comprises at least one of compounds represented by Chemical Formula 2-1 to Chemical Formula 2-2:



-continued

Chemical Formula 2-2



wherein, in Chemical Formula 2-1 to Chemical Formula 2-2,

X^3 and X^4 are the same as defined in Chemical Formula 1 of claim 2,

R^{11} , R^{12} , R^{13} , R^{14} , R^{15} , R^{16} , R^{21} , R^{22} , R^{23} , R^{24} , R^{25} , and R^{26} are each independently a substituted or unsubstituted C4 to C20 alkyl group, a substituted or unsubstituted C3 to C20 cycloalkyl group, a substituted or unsubstituted C6 to C20 aryl group, or a substituted or unsubstituted C3 to C20 heteroaryl group, provided that at least one of R^{11} to R^{14} and at least one of R^{21} to R^{26} are a substituted or unsubstituted C4 to C20 alkyl group,

R^{27} and R^{28} are each independently a substituted or unsubstituted C2 to C40 alkylamine group, a substituted or unsubstituted C12 to C40 arylamine group, or a substituted or unsubstituted carbazolyl group, and provided that when R^{13} , R^{14} , R^{15} , R^{16} , R^{23} , R^{24} , R^{25} , and R^{26} are a substituted or unsubstituted C3 to C20 cycloalkyl group, a substituted or unsubstituted C6 to C20 aryl group, or a substituted or unsubstituted C3 to C20 heteroaryl group, they are fused with an adjacent aromatic ring by removal of one hydrogen therefrom to provide a C8 to C40 fused bicyclic ring system.

6. The electroluminescent device of claim 2, wherein the first hole transporting material comprises a compound represented by Chemical Formula 3:

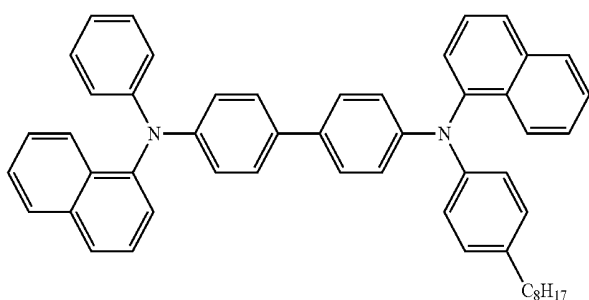
wherein, in Chemical Formula 3,
 X^3 , X^4 , L^1 , L^2 , j , k , l , and m are independently the same
 as defined in claim 2,

R^{33} , R^{34} , R^{35} , R^{36} , R^{37} , and R^{38} are each independently a
 substituted or unsubstituted C4 to C20 alkyl group, a
 substituted or unsubstituted C3 to C20 cycloalkyl
 group, a substituted or unsubstituted C6 to C20 aryl
 group, a substituted or unsubstituted C3 to C20 heteroaryl
 group, a substituted or unsubstituted C2 to C40
 alkylamine group, or a substituted or unsubstituted C6
 to C40 arylamine group, provided that at least one of
 R^{33} to R^{38} is a substituted or unsubstituted C4 to C20
 alkyl group, and

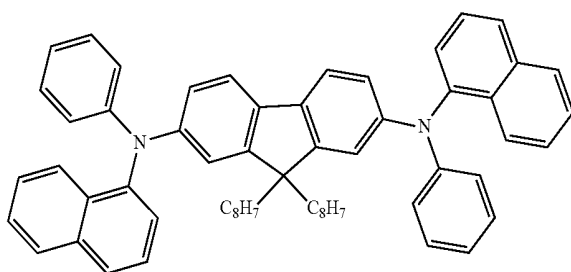
provided that when R^{33} , R^{34} , R^{35} , R^{36} , R^{37} , and R^{38} are
 a substituted or unsubstituted C3 to C20 cycloalkyl
 group, a substituted or unsubstituted C6 to C20 aryl
 group, or a substituted or unsubstituted C3 to C20
 heteroaryl group, they are fused with an adjacent aromatic
 ring to provide a C8 to C40 fused ring.

7. The electroluminescent device of claim 6, wherein at
 least two of groups R^{33} to R^{36} are an unsubstituted C4 to C10
 alkyl group.

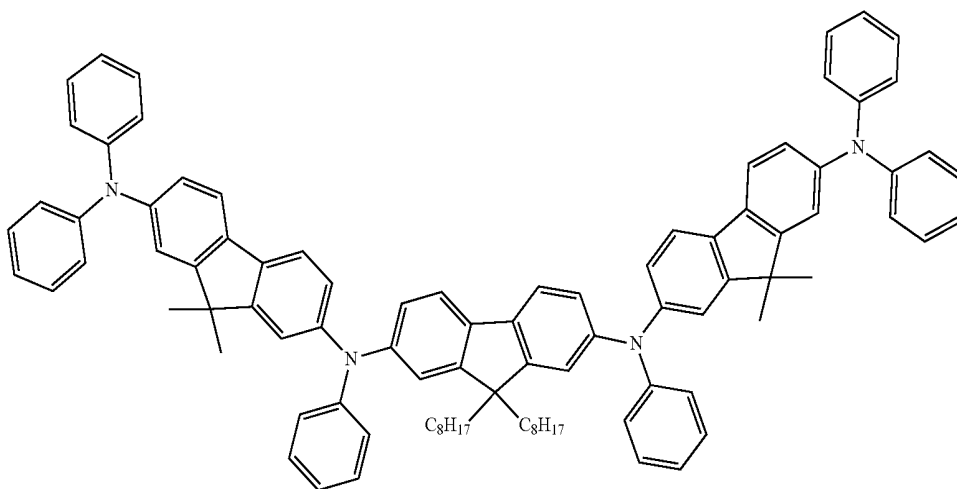
8. The electroluminescent device of claim 2, wherein the
 first hole transporting material comprises at least one of
 compounds represented by Chemical Formula A to Chemical
 Formula F:



Chemical Formula A



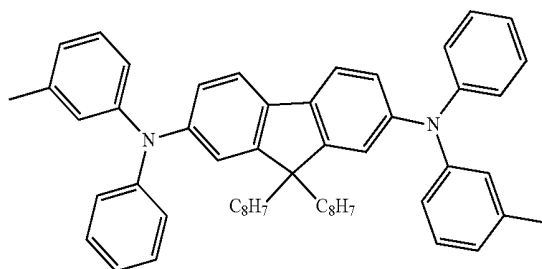
Chemical Formula B



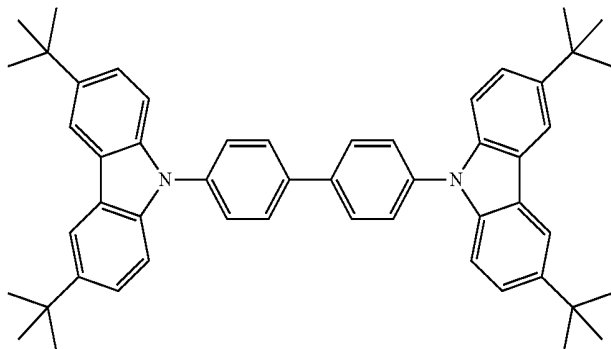
Chemical Formula C

-continued

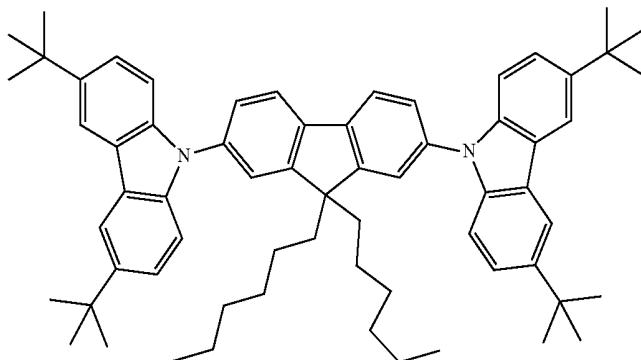
Chemical Formula D



Chemical Formula E



Chemical Formula F



9. The electroluminescent device of claim 1, wherein the first hole transporting material is soluble in a non-polar solvent.

10. The electroluminescent device of claim 1, wherein the first hole transporting material is included in an amount of greater than or equal to 2 weight percent and less than 50 weight percent based on a total weight of the emission layer.

11. The electroluminescent device of claim 1, wherein a root mean square roughness of a surface of the emission layer measured by atomic-force microscopy (AFM) is about 0.5 to about 2.0.

12. The electroluminescent device of claim 1, wherein the plurality of quantum dots further comprises a hydrophobic ligand bound to a surface thereof.

13. The electroluminescent device of claim 1, wherein the plurality of quantum dots comprises a Group II-VI compound, a Group III-V compound, a Group IV-VI compound, a Group IV element or compound, a Group I-III-VI compound, a Group I-II-IV-VI compound, or a combination thereof.

14. The electroluminescent device of claim 1, wherein the plurality of quantum dots has a core-shell structure.

15. The electroluminescent device of claim 1, wherein the second hole transporting material and the first hole transporting material are a different material.

16. The electroluminescent device of claim 15, wherein the second hole transporting material comprises a poly(3,4-ethylenedioxythiophene) or derivative thereof, a poly(styrenesulfonate) or derivative thereof, a poly(N-vinylcarbazole) or derivative thereof, a poly(phenylene vinylene) or derivative thereof, a poly(C1 to C10 alkyl) (meth)acrylate) or derivative thereof, a poly(C6 to C40 arylamine) or derivative thereof, a polyaniline or derivative thereof, a polypyrrole or derivative thereof, a poly(9,9-dioctylfluorene) or derivative thereof, a poly(spiro-fluorene) or derivative thereof, a poly-(N,N'-diphenyl-N,N'-bis(3-methylphenyl)-(1,1'-biphenyl)-4,4'-diamine) or derivative thereof, NiO, MoO₃, or a combination thereof.

17. The electroluminescent device of claim 1, wherein the electron transport layer comprises an inorganic nanoparticle, a quinolone compound, a triazine compound, a quinoline compound, a triazole compound, a naphthalene compound, or a combination thereof.

18. The electroluminescent device of claim 17, wherein the electron transport layer comprises a cluster layer comprising a plurality of inorganic nanoparticles.

19. The electroluminescent device of claim 1, wherein the electron transport layer has an average thickness of about 20 nanometers to about 100 nanometers.

20. The electroluminescent device of claim 1, wherein the emission layer has an average thickness of about 15 nanometers to about 100 nanometers.

21. The electroluminescent device of claim 1, further comprising a hole injection layer disposed between the first electrode and the hole transport layer.

22. A display device comprising the electroluminescent device of claim 1.

* * * * *

专利名称(译)	电致发光器件及其显示装置		
公开(公告)号	US20200083450A1	公开(公告)日	2020-03-12
申请号	US16/562601	申请日	2019-09-06
[标]申请(专利权)人(译)	三星电子株式会社		
申请(专利权)人(译)	SAMSUNG ELECTRONICS CO. , LTD.		
当前申请(专利权)人(译)	SAMSUNG ELECTRONICS CO. , LTD.		
[标]发明人	HAN MOON GYU CHUNG DAE YOUNG KIM KWANGHEE JANG EUN JOO KIM CHAN SU YOON WON SIK		
发明人	HAN, MOON GYU CHUNG, DAE YOUNG KIM, KWANGHEE JANG, EUN JOO KIM, CHAN SU PARK, KUN SU YOON, WON SIK		
IPC分类号	H01L51/00		
CPC分类号	H01L51/0072 H01L2251/5369 H01L51/006 H01L51/502 H01L2251/558 H01L51/56 H01L51/5072 H01L51/5056 H01L51/5088 H01L51/0003 H01L51/0052 C09K11/62 C09K11/70 C09K11/88		
优先权	1020180107005 2018-09-07 KR		
外部链接	Espacenet USPTO		

摘要(译)

电致发光器件包括彼此面对的第一电极和第二电极；以及第一电极和第二电极。发射层设置在第一电极和第二电极之间，并且包括多个量子点和具有连接至主链结构的取代或未取代的C4至C20烷基的第一空穴传输材料；空穴传输层，其设置在发射层和第一电极之间，并且包括第二空穴传输材料；电子传输层位于发射层和第二电极之间。

